



Datasheet for ABIN321833
anti-CDR2 antibody (N-Term)



[Go to Product page](#)

2 Images

Overview

Quantity:	100 µL
Target:	CDR2
Binding Specificity:	N-Term
Reactivity:	Human, Mouse, Rat, Cow, Dog, Rabbit, Guinea Pig, Horse, Monkey, Pig
Host:	Rabbit
Clonality:	Polyclonal
Conjugate:	This CDR2 antibody is un-conjugated
Application:	Immunohistochemistry (IHC), Western Blotting (WB), Immunohistochemistry (Paraffin-embedded Sections) (IHC (p))

Product Details

Immunogen:	Synthetic peptide from N-Terminus of human CDR2 (Q01850, NP_001793). Percent identity by BLAST analysis: Human, Gorilla, Gibbon, Monkey, Marmoset, Mouse, Rat, Elephant, Panda, Dog, Bovine, Rabbit, Horse, Guinea pig (100%), Galago, Opossum, Turkey, Zebra finch, Chicken, Platypus, Xenopus (92%), Zebrafish (91%), Lizard (85%), Drosophila, Beetle (83%). Type of Immunogen: Synthetic peptide
Isotype:	IgG
Specificity:	Human CDR2
Predicted Reactivity:	Percent identity by BLAST analysis: Human, Mouse, Rat, Dog, Bovine, Rabbit, Horse, Guinea pig (100%) Chicken, Xenopus (92%) Zebrafish (85%).

Product Details

Purification: Protein A purified

Target Details

Target: CDR2

Alternative Name: Yo / CDR2 ([CDR2 Products](#))

Background: Name/Gene ID: CDR2

Synonyms: CDR2, CDR62, Yo paraneoplastic antigen, PCD17, Yo

Gene ID: 1039

NCBI Accession: [NP_001793](#)

UniProt: [Q01850](#)

Application Details

Application Notes: Approved: IHC, IHC-P, WB

Usage: ELISA titer using peptide based assay: 1:312500. Western Blot: Suggested dilution at 5.0 µg/mL in 5 % skim milk / PBS buffer, and HRP conjugated anti-Rabbit IgG should be diluted in 1:50000 - 100000 as second antibody.

Comment: Target Species of Antibody: Human

Restrictions: For Research Use only

Handling

Format: Lyophilized

Reconstitution: Distilled Water.

Concentration: Lot specific

Buffer: Lyophilized from PBS with 2 % sucrose

Handling Advice: Avoid repeat freeze-thaw cycles.

Storage: 4 °C, -20 °C

Storage Comment: Long term: -20°C, the use of 50% glycerol is recommended if storing aliquots in -20°C for long term use (up to 1 year)

Short term (less than 1 week): 4°C. Avoid freeze-thaw cycles.

Images

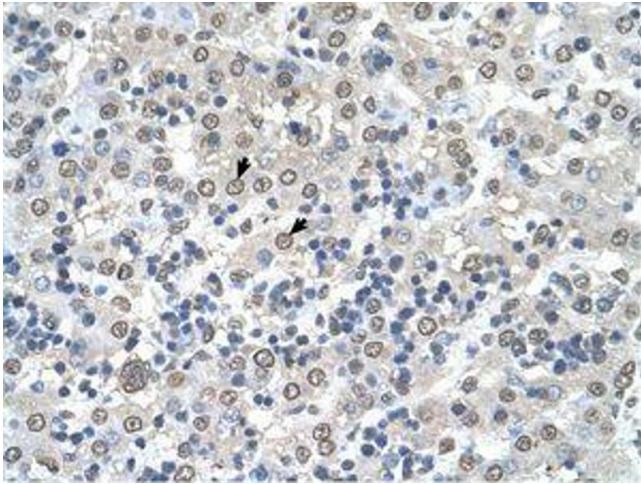


Image 1.

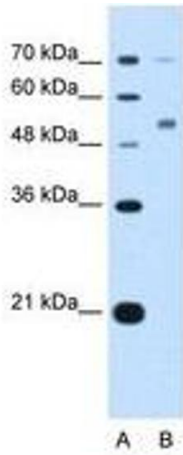


Image 2.