

Datasheet for ABIN321843
anti-CACYBP antibody (AA 108-157)[Go to Product page](#)

1 Image

Overview

Quantity:	100 µL
Target:	CACYBP
Binding Specificity:	AA 108-157
Reactivity:	Human, Dog, Pig, Cow, Horse, Rabbit, Bat, Monkey
Host:	Rabbit
Clonality:	Polyclonal
Conjugate:	This CACYBP antibody is un-conjugated
Application:	Western Blotting (WB)

Product Details

Immunogen:	Synthetic peptide located between aa108-157 of human CACYBP (Q9HB71, NP_055227). Percent identity by BLAST analysis: Human, Chimpanzee, Gorilla, Orangutan, Gibbon, Monkey, Marmoset, Elephant, Dog, Bovine, Bat, Rabbit, Horse, Pig (100%), Mouse, Rat, Guinea pig, Platypus (92%), Turkey, Zebra finch, Chicken, Lizard, Xenopus (85%). Type of Immunogen: Synthetic peptide
Isotype:	IgG
Specificity:	Human CACYBP
Predicted Reactivity:	Percent identity by BLAST analysis: Human, Dog, Rabbit, Horse (100%) Guinea pig (92%) Chicken, Xenopus (85%).
Purification:	Protein A purified

Target Details

Target:	CACYBP
Alternative Name:	CACYBP (CACYBP Products)
Background:	Name/Gene ID: CACYBP Synonyms: CACYBP, Calcyclin-binding protein, HCacyBP, S100A6BP, Siah-interacting protein, SIP, S100A6-binding protein, Calcyclin binding protein, GIG5, PNAS-107, RP1-102G20.6, Siah-interacting protein (SIP)
Gene ID:	27101
NCBI Accession:	NP_055227
UniProt:	Q9HB71
Pathways:	Response to Growth Hormone Stimulus

Application Details

Application Notes:	Approved: WB Usage: ELISA titer using peptide based assay: 1:312500. Western Blot: Suggested dilution at 5.0 µg/mL in 5 % skim milk / PBS buffer, and HRP conjugated anti-Rabbit IgG should be diluted in 1:50000 - 100000 as second antibody.
Comment:	Target Species of Antibody: Human
Restrictions:	For Research Use only

Handling

Format:	Lyophilized
Reconstitution:	Distilled Water.
Concentration:	Lot specific
Buffer:	Lyophilized from PBS with 2 % sucrose
Handling Advice:	Avoid repeat freeze-thaw cycles.
Storage:	4 °C,-20 °C
Storage Comment:	Long term: -20°C, the use of 50% glycerol is recommended if storing aliquots in -20°C for long term use (up to 1 year)

Handling

Short term (less than 1 week): 4°C. Avoid freeze-thaw cycles.

Images

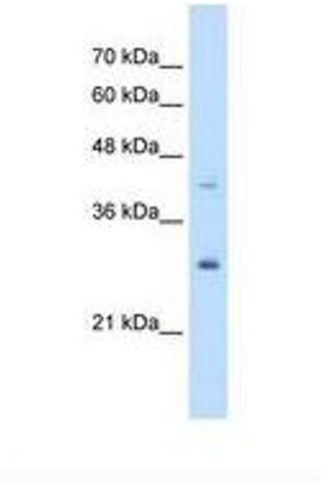


Image 1.