



[Go to Product page](#)

Datasheet for ABIN321861

anti-Aspartate beta Hydroxylase antibody (AA 66-115)

2 Images

Overview

Quantity:	100 µL
Target:	Aspartate beta Hydroxylase (ASPH)
Binding Specificity:	AA 66-115
Reactivity:	Human, Mouse, Rat
Host:	Rabbit
Clonality:	Polyclonal
Conjugate:	This Aspartate beta Hydroxylase antibody is un-conjugated
Application:	Western Blotting (WB), Immunohistochemistry (IHC), Immunohistochemistry (Paraffin-embedded Sections) (IHC (p))

Product Details

Immunogen:	Synthetic peptide located between aa66-115 of human ASPH (Q9NRI0, NP_064549). Percent identity by BLAST analysis: Human, Monkey (100%), Marmoset, Dog (92%), Mouse, Rat (85%). Type of Immunogen: Synthetic peptide
Isotype:	IgG
Specificity:	Human ASPH
Predicted Reactivity:	Percent identity by BLAST analysis: Human (100%) Dog (92%) Mouse, Rat (85%).
Purification:	Protein A purified

Target Details

Target:	Aspartate beta Hydroxylase (ASPH)
Alternative Name:	Junctin / ASPH (ASPH Products)
Background:	Name/Gene ID: ASPH Synonyms: ASPH, A beta H-J-J, AAH, ASP beta-hydroxylase, BAH, Aspartate beta-hydroxylase, CASQ2BP1, Cardiac junctin, HAAH, Humbug, JCTN, Junctate, Junctin
Gene ID:	444
NCBI Accession:	NP_064549
UniProt:	Q12797
Pathways:	Positive Regulation of Endopeptidase Activity

Application Details

Application Notes:	Approved: IHC, IHC-P, WB Usage: ELISA titer using peptide based assay: 1:312500. Western Blot: Suggested dilution at 2.5 µg/mL in 5 % skim milk / PBS buffer, and HRP conjugated anti-Rabbit IgG should be diluted in 1:50000 - 100000 as second antibody.
Comment:	Target Species of Antibody: Human
Restrictions:	For Research Use only

Handling

Format:	Lyophilized
Reconstitution:	Distilled Water.
Concentration:	Lot specific
Buffer:	Lyophilized from PBS with 2 % sucrose
Handling Advice:	Avoid repeat freeze-thaw cycles.
Storage:	4 °C, -20 °C
Storage Comment:	Long term: -20°C, the use of 50% glycerol is recommended if storing aliquots in -20°C for long term use (up to 1 year) Short term (less than 1 week): 4°C. Avoid freeze-thaw cycles.

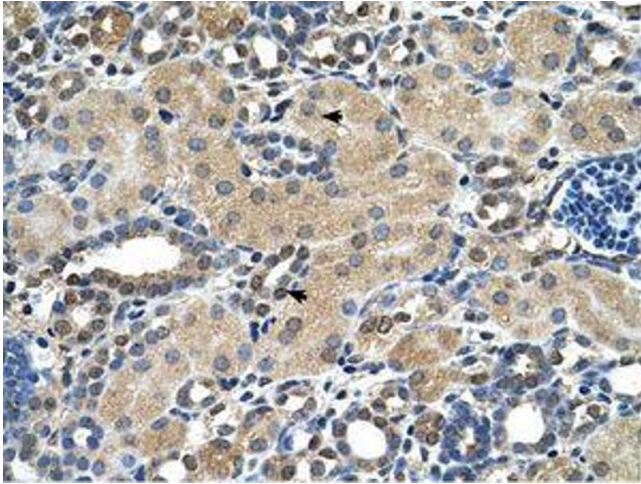


Image 1.

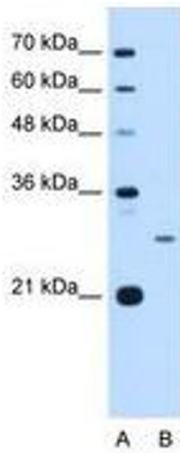


Image 2.