

Datasheet for ABIN322258
anti-RAB3D antibody (C-Term)[Go to Product page](#)

1 Image

Overview

Quantity:	100 µL
Target:	RAB3D
Binding Specificity:	C-Term
Reactivity:	Human, Mouse, Rat, Cow, Rabbit
Host:	Rabbit
Clonality:	Polyclonal
Conjugate:	This RAB3D antibody is un-conjugated
Application:	Western Blotting (WB)

Product Details

Immunogen:	Synthetic peptide from C-Terminus of human RAB3D (O95716, NP_004274). Percent identity by BLAST analysis: Human, Chimpanzee, Gibbon, Monkey (100%), Gorilla, Marmoset (93%), Bovine, Bat, Rabbit (86%), Galago, Mouse, Rat, Hamster, Panda (80%). Type of Immunogen: Synthetic peptide
Isotype:	IgG
Specificity:	Human RAB3D
Predicted Reactivity:	Percent identity by BLAST analysis: Human (100%) Bovine, Rabbit (86%) Mouse, Rat (80%).
Purification:	Protein A purified

Target Details

Target:	RAB3D
Alternative Name:	RAB3D (RAB3D Products)
Background:	Name/Gene ID: RAB3D Subfamily: RAS oncogene Family: Ras GTPase superfamily IPR001806 Synonyms: RAB3D, D2-2, Gtp-binding protein rab3d, RAD3D, RAB16, Ras-related protein Rab-3D, Glioblastoma overexpressed, GOV
Gene ID:	9545
NCBI Accession:	NP_004274
UniProt:	O95716

Application Details

Application Notes:	Approved: WB Usage: ELISA titer using peptide based assay: 1:1562500. Western Blot: Suggested dilution at 2.5 µg/mL in 5 % skim milk / PBS buffer, and HRP conjugated anti-Rabbit IgG should be diluted in 1:50000 - 100000 as second antibody.
Comment:	Target Species of Antibody: Human
Restrictions:	For Research Use only

Handling

Format:	Lyophilized
Reconstitution:	Distilled Water.
Concentration:	Lot specific
Buffer:	Lyophilized from PBS, 2 % sucrose.
Handling Advice:	Avoid repeat freeze-thaw cycles.
Storage:	4 °C, -20 °C
Storage Comment:	Long term: -20°C, the use of 50% glycerol is recommended if storing aliquots in -20°C for long term use (up to 1 year)

Handling

Short term (less than 1 week): 4°C. Avoid freeze-thaw cycles.

Images

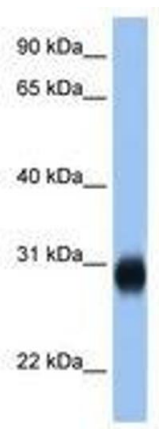


Image 1.