

Datasheet for ABIN324250  
**anti-SMAD7 antibody (N-Term)**



[Go to Product page](#)

1 Image

Overview

Quantity:	100 µL
Target:	SMAD7
Binding Specificity:	N-Term
Reactivity:	Human, Rat, Monkey
Host:	Rabbit
Clonality:	Polyclonal
Conjugate:	This SMAD7 antibody is un-conjugated
Application:	Western Blotting (WB)

Product Details

Immunogen:	Synthetic peptide from N-Terminus of human SMAD7 (O15105, NP_005895). Percent identity by BLAST analysis: Human, Monkey, Marmoset (100%), Mouse, Dog, Bovine, Bat, Rabbit, Pig (92%), Galago (85%), Rat (84%).  Type of Immunogen: Synthetic peptide
Isotype:	IgG
Specificity:	Human SMAD7
Predicted Reactivity:	Percent identity by BLAST analysis: Human (100%) Mouse, Dog, Bovine, Pig (92%) Rat (84%).
Purification:	Protein A purified

## Target Details

---

Target:	SMAD7
Alternative Name:	SMAD7 ( <a href="#">SMAD7 Products</a> )
Background:	Name/Gene ID: SMAD7  Synonyms: SMAD7, CRCS3, HSMAD7, MAD homolog 7, SMAD 7, MADH7, MADH8, Mothers against DPP homolog 7, Mothers against DPP homolog 8, MAD homolog 8, SMAD family member 7
Gene ID:	4092
NCBI Accession:	<a href="#">NP_005895</a>
UniProt:	<a href="#">O15105</a>
Pathways:	<a href="#">Interferon-gamma Pathway</a> , <a href="#">Cell-Cell Junction Organization</a>

## Application Details

---

Application Notes:	Approved: WB  Usage: ELISA titer using peptide based assay: 1:62500. Western Blot: Suggested dilution at 1.25 µg/mL in 5 % skim milk / PBS buffer, and HRP conjugated anti-Rabbit IgG should be diluted in 1:50000 - 100000 as second antibody.
Comment:	Target Species of Antibody: Human
Restrictions:	For Research Use only

## Handling

---

Format:	Lyophilized
Reconstitution:	Distilled Water.
Concentration:	Lot specific
Buffer:	Lyophilized from PBS with 2 % sucrose
Handling Advice:	Avoid repeat freeze-thaw cycles.
Storage:	4 °C,-20 °C
Storage Comment:	Long term: -20°C, the use of 50% glycerol is recommended if storing aliquots in -20°C for long term use (up to 1 year)

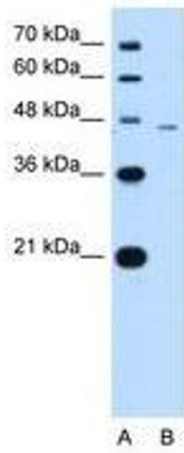
## Handling

---

Short term (less than 1 week): 4°C. Avoid freeze-thaw cycles.

## Images

---



**Image 1.**