

Datasheet for ABIN324381
anti-TRPM5 antibody (AA 247-296)[Go to Product page](#)

2 Images

Overview

Quantity:	100 µL
Target:	TRPM5
Binding Specificity:	AA 247-296
Reactivity:	Human, Mouse, Rat, Guinea Pig, Cow
Host:	Rabbit
Clonality:	Polyclonal
Conjugate:	This TRPM5 antibody is un-conjugated
Application:	Western Blotting (WB), Immunohistochemistry (IHC), Immunohistochemistry (Paraffin-embedded Sections) (IHC (p))

Product Details

Immunogen:	Synthetic peptide located between aa247-296 of human TRPM5 (Q9NZQ8, NP_055370). Percent identity by BLAST analysis: Human, Gorilla, Gibbon (100%), Monkey, Galago, Marmoset, Elephant, Dog, Horse (92%), Mouse (85%), Rat (78%). Type of Immunogen: Synthetic peptide
Isotype:	IgG
Specificity:	Human TRPM5
Predicted Reactivity:	Percent identity by BLAST analysis: Human (100%) Dog, Horse (92%) Mouse (85%).
Purification:	Protein A purified

Target Details

Target:	TRPM5
Alternative Name:	TRPM5 (TRPM5 Products)
Background:	Name/Gene ID: TRPM5 Subfamily: Calcium channel - TRP Family: Ion Channel Synonyms: TRPM5, LTRPC5, MLSN1 and TRP-related, MTr1, LTrpC-5
Gene ID:	29850
NCBI Accession:	NP_055370
UniProt:	Q9NZQ8

Application Details

Application Notes:	Approved: IHC, IHC-P, WB Usage: ELISA titer using peptide based assay: 1:1562500. Western Blot: Suggested dilution at 1.25 µg/mL in 5 % skim milk / PBS buffer, and HRP conjugated anti-Rabbit IgG should be diluted in 1:50000 - 100000 as second antibody.
Comment:	Target Species of Antibody: Human
Restrictions:	For Research Use only

Handling

Format:	Lyophilized
Reconstitution:	Distilled Water.
Concentration:	Lot specific
Buffer:	Lyophilized from PBS with 2 % sucrose
Handling Advice:	Avoid repeat freeze-thaw cycles.
Storage:	4 °C, -20 °C
Storage Comment:	Long term: -20°C, the use of 50% glycerol is recommended if storing aliquots in -20°C for long term use (up to 1 year) Short term (less than 1 week): 4°C. Avoid freeze-thaw cycles.

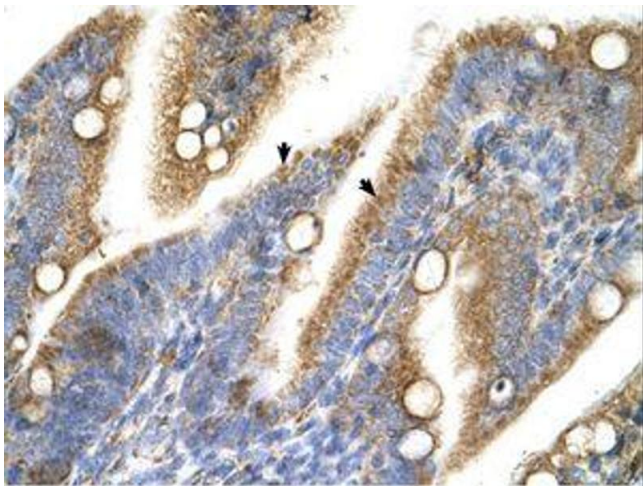


Image 1.

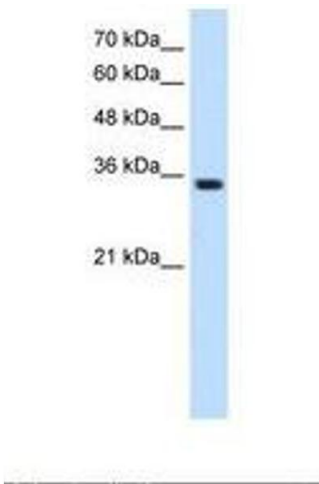


Image 2.