



Datasheet for ABIN324386
anti-TRIM13 antibody (AA 51-100)



[Go to Product page](#)

1 Image

Overview

Quantity:	100 µL
Target:	TRIM13
Binding Specificity:	AA 51-100
Reactivity:	Human, Rat, Cow
Host:	Rabbit
Clonality:	Polyclonal
Conjugate:	This TRIM13 antibody is un-conjugated
Application:	Western Blotting (WB)

Product Details

Immunogen:	Synthetic peptide located between aa51-100 of human KCNRG (Q8N5I3, NP_775876). Percent identity by BLAST analysis: Human, Chimpanzee (100%), Gorilla, Gibbon, Monkey, Dog, Bat, Rabbit, Horse, Pig (92%), Platypus (90%), Panda, Bovine (85%), Rat, Elephant, Zebra finch (84%), Lizard (83%). Type of Immunogen: Synthetic peptide
Isotype:	IgG
Specificity:	Human TRIM13 / RFP2
Predicted Reactivity:	Percent identity by BLAST analysis: Human (100%) Dog, Pig (92%) Bovine (85%) Rat (84%).
Purification:	Protein A purified

Target Details

Target:	TRIM13
Alternative Name:	TRIM13 (TRIM13 Products)
Background:	Name/Gene ID: TRIM13 Family: Tripartite Motif Synonyms: TRIM13, DLEU5, CLL-associated RING finger, LEU5, Leukemia-associated protein 5, RING finger protein 77, Tripartite motif protein 13, Putative tumor suppressor RFP2, RFP2, CAR, Ret finger protein 2, RNF77, Tripartite motif containing 13, Tripartite motif-containing 13
Gene ID:	10206
NCBI Accession:	NP_775876
UniProt:	O60858

Application Details

Application Notes:	Approved: WB Usage: ELISA titer using peptide based assay: 1:312500. Western Blot: Suggested dilution at 2.5 µg/mL in 5 % skim milk / PBS buffer, and HRP conjugated anti-Rabbit IgG should be diluted in 1:50000 - 100000 as second antibody.
Comment:	Target Species of Antibody: Human
Restrictions:	For Research Use only

Handling

Format:	Lyophilized
Reconstitution:	Distilled Water.
Concentration:	Lot specific
Buffer:	Lyophilized from PBS with 2 % sucrose
Handling Advice:	Avoid repeat freeze-thaw cycles.
Storage:	4 °C, -20 °C
Storage Comment:	Long term: -20°C, the use of 50% glycerol is recommended if storing aliquots in -20°C for long term use (up to 1 year)

Handling

Short term (less than 1 week): 4°C. Avoid freeze-thaw cycles.

Images

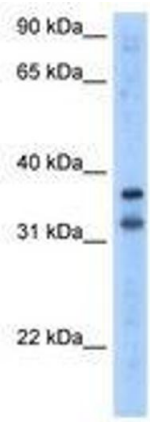


Image 1.