



[Go to Product page](#)

Datasheet for ABIN324391

anti-ZNF213 antibody (AA 151-200)

1 Image

Overview

Quantity:	100 µL
Target:	ZNF213
Binding Specificity:	AA 151-200
Reactivity:	Human, Horse, Monkey
Host:	Rabbit
Clonality:	Polyclonal
Conjugate:	This ZNF213 antibody is un-conjugated
Application:	Western Blotting (WB)

Product Details

Immunogen:	Synthetic peptide located between aa151-200 of human ZNF213 (O14771, NP_004211). Percent identity by BLAST analysis: Human, Gibbon, Monkey (100%), Gorilla (92%), Horse (85%). Type of Immunogen: Synthetic peptide
Isotype:	IgG
Specificity:	Human ZNF213
Predicted Reactivity:	Percent identity by BLAST analysis: Horse (85%).
Purification:	Protein A purified

Target Details

Target:	ZNF213
---------	--------

Target Details

Alternative Name: ZNF213 ([ZNF213 Products](#))

Background: Name/Gene ID: ZNF213
Family: Zinc Finger

Synonyms: ZNF213, CR53, ZKSCAN21, ZSCAN53, Zinc finger protein 213

Gene ID: 7760

NCBI Accession: [NP_004211](#)

UniProt: [O14771](#)

Application Details

Application Notes: Approved: WB

Usage: ELISA titer using peptide based assay: 1:12500. Western Blot: Suggested dilution at 1.25 µg/mL in 5 % skim milk / PBS buffer, and HRP conjugated anti-Rabbit IgG should be diluted in 1:50000 - 100000 as second antibody.

Comment: Target Species of Antibody: Human

Restrictions: For Research Use only

Handling

Format: Lyophilized

Reconstitution: Distilled Water.

Concentration: Lot specific

Buffer: Lyophilized from PBS with 2 % sucrose

Handling Advice: Avoid repeat freeze-thaw cycles.

Storage: 4 °C, -20 °C

Storage Comment: Long term: -20°C, the use of 50% glycerol is recommended if storing aliquots in -20°C for long term use (up to 1 year)
Short term (less than 1 week): 4°C. Avoid freeze-thaw cycles.

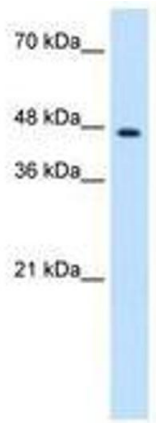


Image 1.