



[Go to Product page](#)

Datasheet for ABIN324420  
**anti-AKAP7 antibody (AA 223-272)**

1 Image

Overview

Quantity:	100 µL
Target:	AKAP7
Binding Specificity:	AA 223-272
Reactivity:	Human, Rat, Mouse, Cow, Monkey
Host:	Rabbit
Clonality:	Polyclonal
Conjugate:	This AKAP7 antibody is un-conjugated
Application:	Western Blotting (WB)

Product Details

Immunogen:	Synthetic peptide located between aa223-272 of human AKAP7 (Q9P0M2, NP_057461). Percent identity by BLAST analysis: Human, Gorilla, Gibbon, Marmoset, Rat (100%), Bat, Rabbit (92%), Horse (91%), Dog (90%), Galago, Elephant (85%), Bovine (83%), Mouse (78%).  Type of Immunogen: Synthetic peptide
Isotype:	IgG
Specificity:	Human AKAP7
Predicted Reactivity:	Percent identity by BLAST analysis: Human (100%) Rabbit (92%) Horse (91%) Dog (90%) Rat (85%) Bovine (83%).
Purification:	Protein A purified

## Target Details

---

Target:	AKAP7
Alternative Name:	AKAP7 ( <a href="#">AKAP7 Products</a> )
Background:	Name/Gene ID: AKAP7  Synonyms: AKAP7, A-kinase anchor protein 9 kDa, A-kinase anchor protein 18 kDa, AKAP-7 isoforms alpha and beta, AKAP-7 isoform gamma, AKAP 18, AKAP15, AKAP18, PRKA7 isoform gamma, PRKA7 isoforms alpha/beta
Gene ID:	9465
NCBI Accession:	<a href="#">NP_057461</a>
UniProt:	<a href="#">Q9P0M2</a>

## Application Details

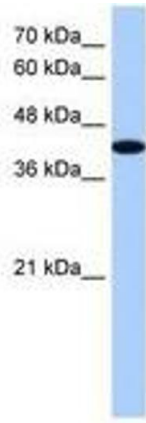
---

Application Notes:	Approved: WB  Usage: ELISA titer using peptide based assay: 1:312500. Western Blot: Suggested dilution at 1.25 µg/mL in 5 % skim milk / PBS buffer, and HRP conjugated anti-Rabbit IgG should be diluted in 1:50000 - 100000 as second antibody.
Comment:	Target Species of Antibody: Human
Restrictions:	For Research Use only

## Handling

---

Format:	Lyophilized
Reconstitution:	Distilled Water.
Concentration:	Lot specific
Buffer:	Lyophilized from PBS with 2 % sucrose
Handling Advice:	Avoid repeat freeze-thaw cycles.
Storage:	4 °C, -20 °C
Storage Comment:	Long term: -20°C, the use of 50% glycerol is recommended if storing aliquots in -20°C for long term use (up to 1 year)  Short term (less than 1 week): 4°C. Avoid freeze-thaw cycles.



**Image 1.**