



Datasheet for ABIN324485  
**anti-DLX5 antibody (N-Term)**



[Go to Product page](#)

2 Images

Overview

Quantity:	100 µL
Target:	DLX5
Binding Specificity:	N-Term
Reactivity:	Human, Mouse, Rat, Cow, Dog, Rabbit, Horse, Pig, Bat, Hamster, Monkey
Host:	Rabbit
Clonality:	Polyclonal
Application:	Western Blotting (WB), Immunohistochemistry (IHC), Immunohistochemistry (Paraffin-embedded Sections) (IHC (p))

Product Details

Immunogen:	Synthetic peptide from N-Terminus of human DLX5 (P56178, NP_005212). Percent identity by BLAST analysis: Human, Chimpanzee, Gorilla, Gibbon, Monkey, Galago, Marmoset, Mouse, Rat, Hamster, Panda, Dog, Bovine, Bat, Rabbit, Horse, Pig (100%), Elephant, Guinea pig, Zebra finch (92%), Chicken (84%).  Type of Immunogen: Synthetic peptide
Isotype:	IgG
Specificity:	Human DLX5
Predicted Reactivity:	Percent identity by BLAST analysis: Human, Mouse, Rat, Dog, Bovine, Rabbit, Pig (100%) Chicken (84%).
Purification:	Protein A purified

## Target Details

---

Target:	DLX5
Alternative Name:	DLX5 ( <a href="#">DLX5 Products</a> )
Background:	Name/Gene ID: DLX5  Synonyms: DLX5, Distal-less homeobox 5, Homeobox protein DLX-5, Distal-less homeo box 5, SHFM1D
Gene ID:	1749
NCBI Accession:	<a href="#">NP_005212</a>
UniProt:	<a href="#">P56178</a>

## Application Details

---

Application Notes:	Approved: IHC, IHC-P, WB  Usage: ELISA titer using peptide based assay: 1:1562500. Western Blot: Suggested dilution at 1.25 µg/mL in 5 % skim milk / PBS buffer, and HRP conjugated anti-Rabbit IgG should be diluted in 1:50000 - 100000 as second antibody.
Comment:	Target Species of Antibody: Human
Restrictions:	For Research Use only

## Handling

---

Format:	Lyophilized
Reconstitution:	Distilled Water.
Concentration:	Lot specific
Buffer:	Lyophilized from PBS with 2 % sucrose
Handling Advice:	Avoid repeat freeze-thaw cycles.
Storage:	4 °C,-20 °C
Storage Comment:	Long term: -20°C, the use of 50% glycerol is recommended if storing aliquots in -20°C for long term use (up to 1 year)  Short term (less than 1 week): 4°C. Avoid freeze-thaw cycles.

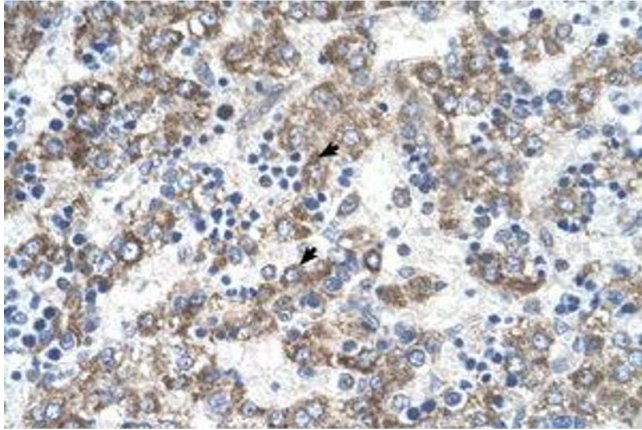


Image 1.

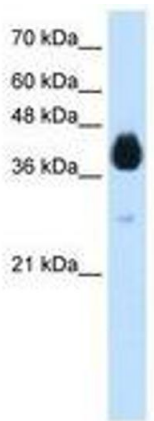


Image 2.