

Datasheet for ABIN334255
anti-S100A8 antibody (FITC)



[Go to Product page](#)

2 Images

Overview

| | |
|--------------|--|
| Quantity: | 50 µg |
| Target: | S100A8 |
| Reactivity: | Human, Rat, Cow, Pig, Rabbit, Dog, Cat, Monkey, Horse |
| Host: | Mouse |
| Clonality: | Monoclonal |
| Conjugate: | This S100A8 antibody is conjugated to FITC |
| Application: | Immunohistochemistry (IHC), Flow Cytometry (FACS), Immunohistochemistry (Paraffin-embedded Sections) (IHC (p)) |

Product Details

| | |
|---------------|---|
| Brand: | IHC-plus™ |
| Immunogen: | Human monocytes. Type of Immunogen: Cells |
| Isotype: | IgG1 |
| Specificity: | Recognizes human L1 Protein or Calprotectin Molecule. Variable results have been reported for the staining of brain macrophages and microglia. Species cross-reactivity: equine, Cynomolgus monkey, Rhesus monkey, monkey, bovine, baboon, rabbit, canine, feline, porcine, guinea pig and rat. |
| Purification: | Protein G purified |

Target Details

| | |
|-------------------|---|
| Target: | S100A8 |
| Alternative Name: | S100A8 / MRP8 (S100A8 Products) |
| Background: | <p>Name/Gene ID: S100A8</p> <p>Synonyms: S100A8, 60B8AG, CFAG, CAGA, Calgranulin A, Calgranulin-A, Calprotectin L1L subunit, Cystic fibrosis antigen, CGLA, L1Ag, NIF, p8, Protein S100-A8, MRP8, Urinary stone protein band A, CP-10, MA387, MRP-8</p> |
| Gene ID: | 6279 |
| UniProt: | P05109 |
| Pathways: | Transition Metal Ion Homeostasis , Positive Regulation of Endopeptidase Activity , S100 Proteins |

Application Details

| | |
|--------------------|---|
| Application Notes: | <p>Approved: Flo, IHC, IHC-P (1:50)</p> <p>Usage: Immunohistochemistry: This antibody was validated for use in immunohistochemistry on a panel of 21 formalin-fixed, paraffin-embedded (FFPE) human tissues after heat induced antigen retrieval in pH 6.0 citrate buffer. After incubation with the primary antibody, slides were incubated with biotinylated secondary antibody, followed by alkaline phosphatase-streptavidin and chromogen. The stained slides were evaluated by a pathologist to confirm staining specificity. The optimal working concentration for this antibody was determined to be 1:50.</p> <p>Flow Cytometry: Neat. Use 10 µL of the suggested working dilution to label 10⁶ cells in 100 µL. Membrane permeabilization is required. The applications listed have been tested for the unconjugated form of this product. Other forms have not been tested.</p> |
| Comment: | Target Species of Antibody: Human |
| Restrictions: | For Research Use only |

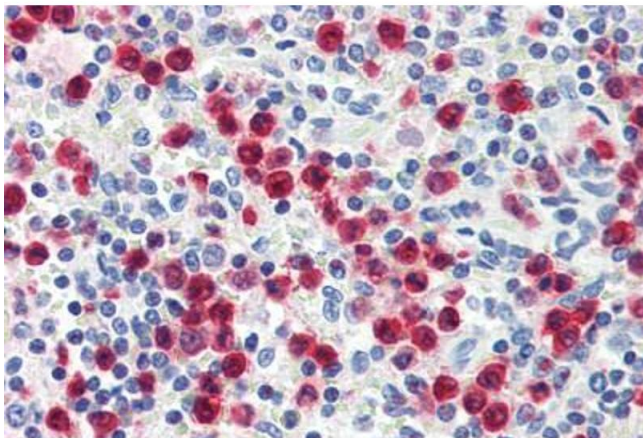
Handling

| | |
|----------------|------------------------------------|
| Format: | Liquid |
| Concentration: | Lot specific |
| Buffer: | PBS, 1 % BSA, 0.09 % sodium azide. |
| Preservative: | Sodium azide |

Handling

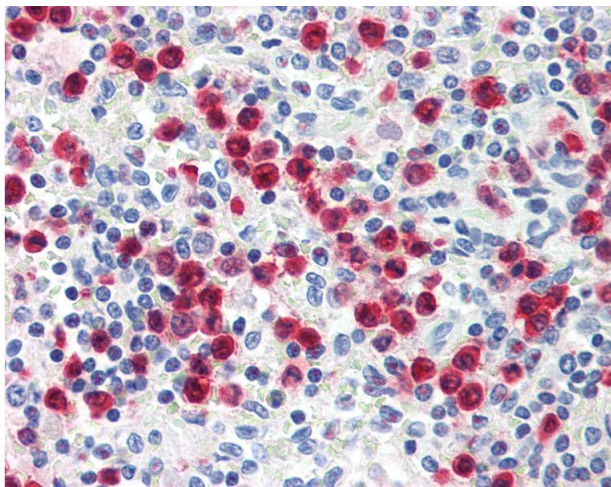
| | |
|--------------------|--|
| Precaution of Use: | This product contains Sodium azide: a POISONOUS AND HAZARDOUS SUBSTANCE which should be handled by trained staff only. |
| Storage: | 4 °C,-20 °C |
| Storage Comment: | Short term: 4°C. Long term: Store at -20°C. Avoid freeze-thaw cycles. |

Images



Immunohistochemistry (Paraffin-embedded Sections)

Image 1. Human Spleen, Granulocytes (formalin-fixed, paraffin-embedded) stained with S100A8 antibody ABIN334255 at 1:50 followed by biotinylated anti-mouse IgG secondary antibody ABIN481714, alkaline phosphatase-streptavidin and chromogen.



Immunohistochemistry

Image 2. Anti-S100A8 antibody IHC of human spleen, granulocytes. Immunohistochemistry of formalin-fixed, paraffin-embedded tissue after heat-induced antigen retrieval. Antibody dilution 1:50. This image was taken for the unconjugated form of this product. Oth ...