



Datasheet for ABIN334260  
**anti-TLR7 antibody (AA 706-728)**



[Go to Product page](#)

2 Images

Overview

Quantity:	50 µg
Target:	TLR7
Binding Specificity:	AA 706-728
Reactivity:	Human, Mouse
Host:	Rabbit
Clonality:	Polyclonal
Conjugate:	This TLR7 antibody is un-conjugated
Application:	Western Blotting (WB), Immunohistochemistry (IHC), Flow Cytometry (FACS), Immunohistochemistry (Paraffin-embedded Sections) (IHC (p)), Immunohistochemistry (Frozen Sections) (IHC (fro))

Product Details

Brand:	IHC-plus™
Immunogen:	Synthetic peptide from human TLR7.  Type of Immunogen: Synthetic peptide
Isotype:	IgG
Specificity:	KLH-conjugated synthetic peptide corresponding to amino acids 706-728 of human TLR7. It will cross-react with mouse TLR7. In human Ramos cells, additional bands are seen.
Purification:	Protein G purified

## Target Details

---

Target:	TLR7
Alternative Name:	TLR7 ( <a href="#">TLR7 Products</a> )
Background:	Name/Gene ID: TLR7 Family: Toll-like Receptor  Synonyms: TLR7, Toll-like receptor 7
Gene ID:	51284
UniProt:	<a href="#">Q9NYK1</a>
Pathways:	<a href="#">TLR Signaling</a> , <a href="#">Activation of Innate immune Response</a> , <a href="#">Toll-Like Receptors Cascades</a>

## Application Details

---

Application Notes:	Approved: Flo, IHC, IHC-Fr, IHC-P (5 µg/mL), WB (1 - 3 µg/mL)  Usage: Immunohistochemistry: This antibody was validated for use in immunohistochemistry on a panel of 21 formalin-fixed, paraffin-embedded (FFPE) human tissues after heat induced antigen retrieval in pH 6.0 citrate buffer. After incubation with the primary antibody, slides were incubated with biotinylated secondary antibody, followed by alkaline phosphatase-streptavidin and chromogen. The stained slides were evaluated by a pathologist to confirm staining specificity. The optimal working concentration for this antibody was determined to be 5 µg/mL.
Comment:	Target Species of Antibody: Human
Restrictions:	For Research Use only

## Handling

---

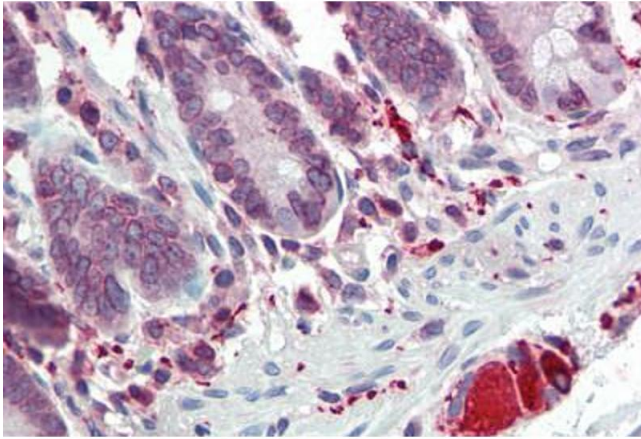
Format:	Liquid
Concentration:	Lot specific
Buffer:	PBS, 0.05 % BSA, 0.05 % sodium azide
Preservative:	Sodium azide
Precaution of Use:	This product contains Sodium azide: a POISONOUS AND HAZARDOUS SUBSTANCE which should be handled by trained staff only.
Handling Advice:	Avoid repeated freezing and thawing.

## Handling

Storage: 4 °C, -20 °C

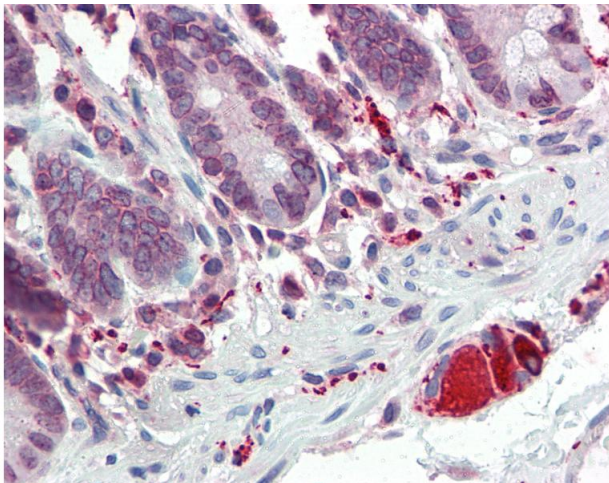
Storage Comment: 4°C or -20°C, Avoid freeze-thaw cycles.

## Images



### Immunohistochemistry (Paraffin-embedded Sections)

**Image 1.** Human Small Intestine (formalin-fixed, paraffin-embedded) stained with TLR7 antibody ABIN334260 at 5 ug/ml followed by biotinylated goat anti-rabbit IgG secondary antibody ABIN481713, alkaline phosphatase-streptavidin and chromogen.



### Immunohistochemistry

**Image 2.** Anti-TLR7 antibody IHC of human small intestine. Immunohistochemistry of formalin-fixed, paraffin-embedded tissue after heat-induced antigen retrieval. Antibody concentration 5 ug/ml.