

Datasheet for ABIN334265
anti-Claudin 4 antibody (C-Term)

2 Images

[Go to Product page](#)

Overview

Quantity:	50 µg
Target:	Claudin 4 (CLDN4)
Binding Specificity:	C-Term
Reactivity:	Human, Rat, Dog
Host:	Mouse
Clonality:	Monoclonal
Conjugate:	This Claudin 4 antibody is un-conjugated
Application:	Western Blotting (WB), Immunohistochemistry (IHC), Immunohistochemistry (Paraffin-embedded Sections) (IHC (p)), Immunofluorescence (IF)

Product Details

Brand:	IHC-plus™
Immunogen:	Synthetic peptide corresponding to a 22 amino acid sequence derived from the C-terminal region of human Claudin 4. Type of Immunogen: Synthetic peptide
Isotype:	IgG1
Specificity:	Recognizes the human ~22kD Claudin 4 protein and does not cross-react with the protein at 55kD. Species cross-reactivity: rat ileum homogenates and canine MDCK cell lysates by Western Blot and Immunofluorescence. Reactivity has also been confirmed with formalin-fixed, paraffin-embedded (FFPE) human normal colon and colon cancer tissues by

Product Details

Immunohistochemistry.

Purification: Protein A purified

Target Details

Target: Claudin 4 (CLDN4)

Alternative Name: CLDN4 / Claudin 4 ([CLDN4 Products](#))

Background: Name/Gene ID: CLDN4

Family: Claudin

Synonyms: CLDN4, Claudin-4, CPE-receptor, CPETR, CPETR1, Claudin 4, CPE-R, HCPE-R, WBSCR8, CPER

Gene ID: 1364

UniProt: [O14493](#)

Pathways: [Hepatitis C](#)

Application Details

Application Notes: Approved: IF (1 - 3 µg/mL), IHC, IHC-P (5 µg/mL), WB (1 - 3 µg/mL)

Usage: Immunohistochemistry: This antibody was validated for use in immunohistochemistry on a panel of 21 formalin-fixed, paraffin-embedded (FFPE) human tissues after heat induced antigen retrieval in pH 6.0 citrate buffer. After incubation with the primary antibody, slides were incubated with biotinylated secondary antibody, followed by alkaline phosphatase-streptavidin and chromogen. The stained slides were evaluated by a pathologist to confirm staining specificity. The optimal working concentration for this antibody was determined to be 5 µg/mL.

Comment: Target Species of Antibody: Human

Restrictions: For Research Use only

Handling

Format: Liquid

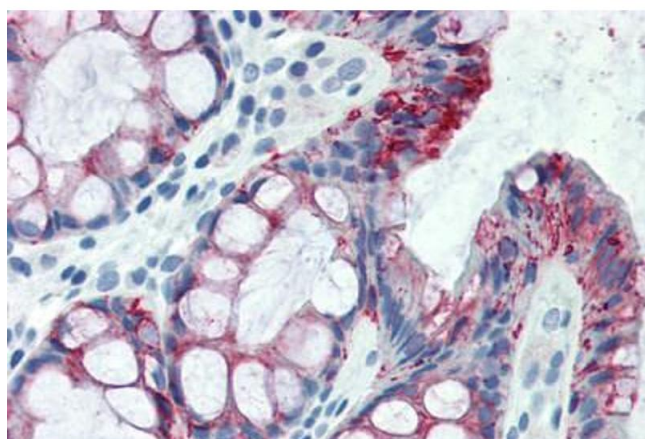
Concentration: Lot specific

Buffer: PBS, pH 7.4, 0.1 % sodium azide.

Handling

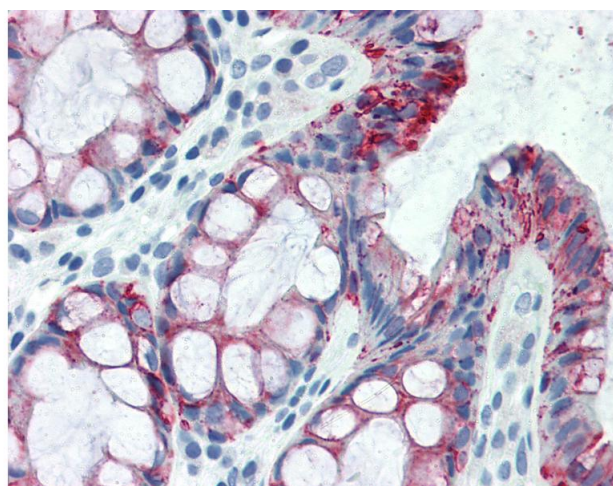
Preservative:	Sodium azide
Precaution of Use:	This product contains Sodium azide: a POISONOUS AND HAZARDOUS SUBSTANCE which should be handled by trained staff only.
Handling Advice:	Aliquot to Avoid freeze/thaw cycles.
Storage:	4 °C, -20 °C
Storage Comment:	Short term 4°C (no longer than 1 week) Long term -20°C Aliquot to avoid freeze/thaw cycles.

Images



Immunohistochemistry (Paraffin-embedded Sections)

Image 1. Human Colon (formalin-fixed, paraffin-embedded) stained with CLDN4 antibody ABIN334265 at 5 ug/ml followed by biotinylated anti-mouse IgG secondary antibody ABIN481714, alkaline phosphatase-streptavidin and chromogen.



Immunohistochemistry

Image 2. Anti-CLDN4 / Claudin 4 antibody IHC of human colon. Immunohistochemistry of formalin-fixed, paraffin-embedded tissue after heat-induced antigen retrieval. Antibody concentration 5 ug/ml.