

Datasheet for ABIN334275
anti-PTH1R antibody (AA 146-169)

2 Images

[Go to Product page](#)

Overview

Quantity:	50 µg
Target:	PTH1R
Binding Specificity:	AA 146-169
Reactivity:	Human, Mouse, Cow, Pig, Dog, Monkey, Horse
Host:	Mouse
Clonality:	Monoclonal
Conjugate:	This PTH1R antibody is un-conjugated
Application:	Western Blotting (WB), Immunohistochemistry (IHC), Immunohistochemistry (Paraffin-embedded Sections) (IHC (p))

Product Details

Brand:	IHC-plus™
Immunogen:	Synthetic peptide corresponding to aa146-169 of human PTH/PTHrP Receptor [RRCDNRNGSWELVPGHNRTWANYSE]. Species sequence Homology: Mouse & rat (23/24aa). Percent identity by BLAST analysis: Human, Gorilla, Orangutan, Gibbon, Monkey, Marmoset, Elephant, Bovine, Dog, Horse, Pig (100%), Mouse, Rat, Hamster, Panda, Bat, Rabbit (96%), Opossum, Chicken (92%), Xenopus (88%). Type of Immunogen: Synthetic peptide
Isotype:	IgG1 kappa
Specificity:	Recognizes human PTH/PTHrP receptor, MW 80kD, and the receptor dimer, Mr 160kD. A faint

Product Details

nonspecific band at 110kD is also detected. This antibody does not detect the PTH2 receptor.

Predicted Reactivity: Percent identity by BLAST analysis: Human, Gorilla, Orangutan, Gibbon, Monkey, Marmoset, Elephant, Bovine, Dog, Horse, Pig (100%) Mouse, Rat, Hamster, Panda, Bat, Rabbit (96%) Opossum, Chicken (92%) Xenopus (88%).

Purification: Protein G purified

Target Details

Target: PTH1R

Alternative Name: PTHR / PTHR1 ([PTH1R Products](#))

Background: Name/Gene ID: PTH1R
Subfamily: Parathyroid hormone
Family: GPCR

Synonyms: PTH1R, Parathyroid hormone 1 receptor, Parathyroid hormone receptor 1, PFE, Pth-related peptide receptor, PTHR, PTH/PTHr receptor, Pth/pthrp receptor, Parathyroid hormone receptor, PTH/PTHrP type I receptor, PTH1 receptor, PTHR1, PTHrP-R, PTHrP-receptor

Gene ID: 5745

UniProt: [Q03431](#)

Pathways: [Regulation of Carbohydrate Metabolic Process](#)

Application Details

Application Notes: Approved: IHC, IHC-P (5 µg/mL), WB (0.5 - 2 µg/mL)

Usage: Immunohistochemistry: This antibody was validated for use in immunohistochemistry on a panel of 21 formalin-fixed, paraffin-embedded (FFPE) human tissues after heat induced antigen retrieval in pH 6.0 citrate buffer. After incubation with the primary antibody, slides were incubated with biotinylated secondary antibody, followed by alkaline phosphatase-streptavidin and chromogen. The stained slides were evaluated by a pathologist to confirm staining specificity. The optimal working concentration for this antibody was determined to be 5 µg/mL. Detects PTH/PTHrP receptor in human kidney, vascular smooth muscle and ovary sections. Receptor was also detected in porcine oocytes. Western Blot: 0.5-2 µg/mL. Detects PTH/PTHrP receptor from RIPA lysates of 3T3-L1 pre-adipose fibroblasts. 3T3-L1 cell lysate was resolved

Application Details

by electrophoresis, transferred to nitrocellulose and probed with P3109-50. Proteins were visualized using an IgG (HRP) goat anti-mouse secondary antibody and a chemiluminescence detection system.

Comment: Target Species of Antibody: Human

Restrictions: For Research Use only

Handling

Format: Liquid

Concentration: Lot specific

Buffer: PBS, pH 7.6, 0.07 % sodium azide, 30 % glycerol

Preservative: Sodium azide

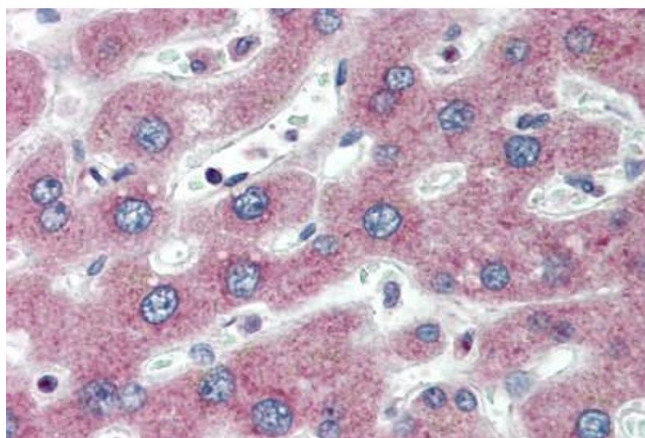
Precaution of Use: This product contains Sodium azide: a POISONOUS AND HAZARDOUS SUBSTANCE which should be handled by trained staff only.

Handling Advice: Avoid repeat freeze-thaw cycles.

Storage: 4 °C, -20 °C

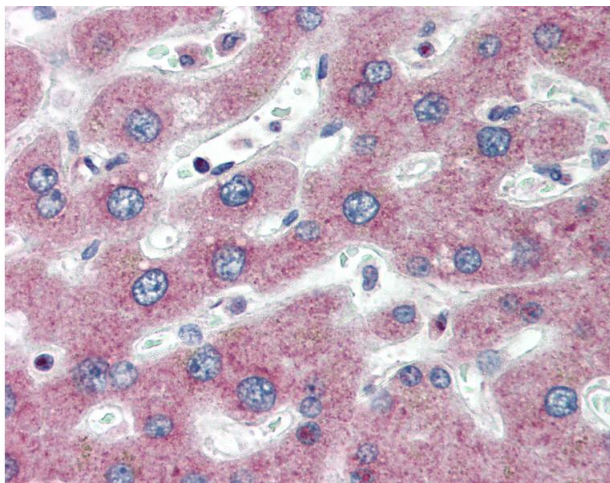
Storage Comment: Short term: 4°C. Long term: Store at -20°C. Avoid freeze-thaw cycles.

Images



Immunohistochemistry (Paraffin-embedded Sections)

Image 1. Human Liver (formalin-fixed, paraffin-embedded) stained with PTHR1 antibody ABIN334275 at 5 ug/ml followed by biotinylated anti-mouse IgG secondary antibody ABIN481714, alkaline phosphatase-streptavidin and chromogen.



Immunohistochemistry

Image 2. Anti-PTH1R antibody IHC of human liver. Immunohistochemistry of formalin-fixed, paraffin-embedded tissue after heat-induced antigen retrieval. Antibody concentration 5 ug/ml.