

Datasheet for ABIN334339

anti-ABCD1 antibody (Internal Region)[Go to Product page](#)**1** Image

Overview

Quantity:	100 µg
Target:	ABCD1
Binding Specificity:	Internal Region
Reactivity:	Human
Host:	Goat
Clonality:	Polyclonal
Conjugate:	This ABCD1 antibody is un-conjugated
Application:	Western Blotting (WB), ELISA

Product Details

Purpose:	ABCD1
Immunogen:	Peptide with sequence C-EDMQRKGYSEQD, from the internal region of the protein sequence according to NP_000024.2.
Sequence:	EDMQRKGYSE QD
Isotype:	IgG
Cross-Reactivity:	Human
Purification:	Purified from goat serum by ammonium sulphate precipitation followed by antigen affinity chromatography using the immunizing peptide.
Grade:	Verified

Target Details

Target:	ABCD1
Alternative Name:	ABCD1 (ABCD1 Products)
Background:	ABCD1, ATP-binding cassette, sub-family D (ALD), member 1, ABC42, ALD, ALDP, AMN, adrenoleukodystrophy protein
Gene ID:	215
NCBI Accession:	NP_000024
Pathways:	Monocarboxylic Acid Catabolic Process

Application Details

Application Notes:	Western Blot: Preliminary experiments gave an approx. 50 kDa band in Human Brain (Cerebellum) lysates after 1 µg/mL antibody staining. Please note that currently we cannot find an explanation in the literature for the band we observe given the calculated s Peptide ELISA: antibody detection limit dilution 1:32000.
Restrictions:	For Research Use only

Handling

Format:	Liquid
Concentration:	0.5 mg/mL
Buffer:	Supplied at 0.5 mg/mL in Tris saline, 0.02 % sodium azide, pH 7.3 with 0.5 % bovine serum albumin.
Preservative:	Sodium azide
Precaution of Use:	This product contains Sodium azide: a POISONOUS AND HAZARDOUS SUBSTANCE which should be handled by trained staff only.
Handling Advice:	Minimize freezing and thawing.
Storage:	-20 °C
Storage Comment:	Aliquot and store at -20°C, with minimal freeze/thawing. A working aliquot may be refrigerated at 4°C for a few weeks and still remain viable.

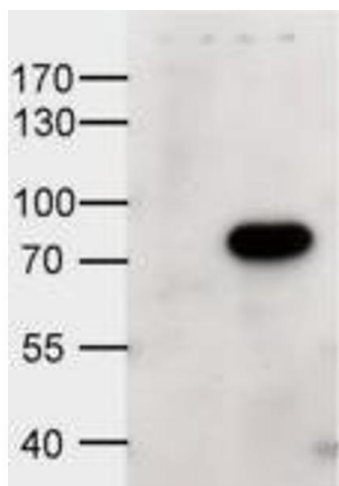


Image 1. HEK293 overexpressing human ABCD1 and probed with ABIN334339 at 1ug/ml (mock transfection in first lane).