

Datasheet for ABIN334341  
**anti-AGR2 antibody (Internal Region)**[Go to Product page](#)

## 4 Images

## Overview

Quantity:	100 µg
Target:	AGR2
Binding Specificity:	Internal Region
Reactivity:	Human
Host:	Goat
Clonality:	Polyclonal
Conjugate:	This AGR2 antibody is un-conjugated
Application:	Western Blotting (WB), ELISA

## Product Details

Purpose:	AGR2
Immunogen:	Peptide with sequence C-GAKKDTKDSRPK, from the internal region of the protein sequence according to NP_006399.1.
Sequence:	GAKKDTKDSR PK
Isotype:	IgG
Cross-Reactivity:	Dog, Human, Mouse
Purification:	Purified from goat serum by ammonium sulphate precipitation followed by antigen affinity chromatography using the immunizing peptide.
Grade:	Verified

## Target Details

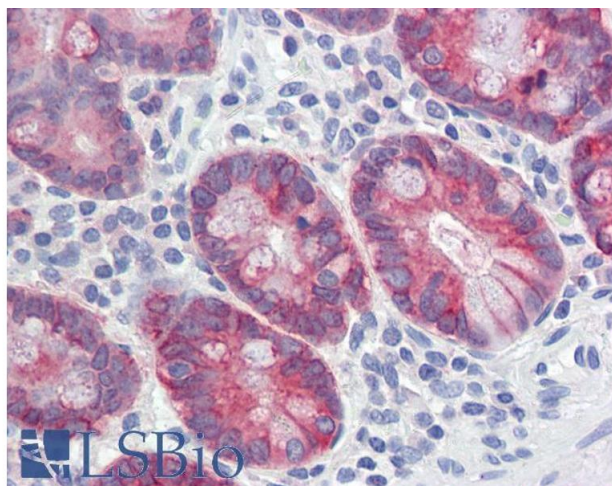
Target:	AGR2
Alternative Name:	AGR2 ( <a href="#">AGR2 Products</a> )
Background:	AGR2, anterior gradient 2 homolog (Xenopus laevis) , AG2, GOB-4, HAG-2, XAG-2 , anterior gradient 2 homolog, anterior gradient 2 homolog (Xenopus laevis), secreted cement gland homolog
Gene ID:	10551, 23795
NCBI Accession:	<a href="#">NP_006399</a>

## Application Details

Application Notes:	Western Blot: Approx. 18 kDa band observed in Human Colon, Duodenum and Lung lysates (calculated MW of 20.0 kDa according to NP_006399.1). Recommended concentration: 0.1-0.3 µg/mL. Primary incubation was 1 hour. Peptide ELISA: antibody detection limit dilution 1:8000.
Restrictions:	For Research Use only

## Handling

Format:	Liquid
Concentration:	0.5 mg/mL
Buffer:	Supplied at 0.5 mg/mL in Tris saline, 0.02 % sodium azide, pH 7.3 with 0.5 % bovine serum albumin.
Preservative:	Sodium azide
Precaution of Use:	This product contains Sodium azide: a POISONOUS AND HAZARDOUS SUBSTANCE which should be handled by trained staff only.
Handling Advice:	Minimize freezing and thawing.
Storage:	-20 °C
Storage Comment:	Aliquot and store at -20°C, with minimal freeze/thawing. A working aliquot may be refrigerated at 4°C for a few weeks and still remain viable.



#### Immunohistochemistry

**Image 1.** ABIN334341 (5µg/ml) staining of paraffin embedded Human Small Intestine. Steamed antigen retrieval with citrate buffer Ph 6, AP-staining. This data is from a previous batch, not on sale.



**Image 2.** ABIN334341 (0.01µg/ml) staining of Human Duodenum lysate (35µg protein in RIPA buffer). Primary incubation was 1 hour. Detected by chemiluminescence.



#### Western Blotting

**Image 3.** ABIN334341 (0.01µg/ml) staining of Human Colon lysate (35µg protein in RIPA buffer). Primary incubation was 1 hour. Detected by chemiluminescence.

Please check the [product details page](#) for more images. Overall 4 images are available for ABIN334341.