

Datasheet for ABIN334342

**anti-ALOX15 antibody (Internal Region)****3** Images[Go to Product page](#)

## Overview

Quantity:	100 µg
Target:	ALOX15
Binding Specificity:	Internal Region
Reactivity:	Human
Host:	Goat
Clonality:	Polyclonal
Conjugate:	This ALOX15 antibody is un-conjugated
Application:	Western Blotting (WB), Immunohistochemistry (IHC), ELISA

## Product Details

Purpose:	ALOX15
Immunogen:	Peptide with sequence C-HYKTDVAVKDDPE, from the internal region of the protein sequence according to NP_001131.3.
Sequence:	HYKTDVAVKD DPE
Isotype:	IgG
Cross-Reactivity:	Human
Purification:	Purified from goat serum by ammonium sulphate precipitation followed by antigen affinity chromatography using the immunizing peptide.
Grade:	Verified

## Target Details

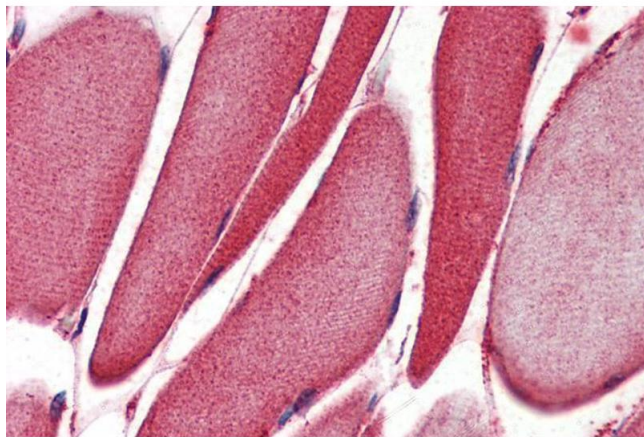
Target:	ALOX15
Alternative Name:	ALOX15 ( <a href="#">ALOX15 Products</a> )
Background:	ALOX15, arachidonate 15-lipoxygenase, 15-LOX-1, 15-LOX2
Gene ID:	246
NCBI Accession:	<a href="#">NP_001131</a>
Pathways:	<a href="#">Regulation of Actin Filament Polymerization</a>

## Application Details

Application Notes:	Immunohistochemistry: Paraffin embedded Human Skeletal Muscle and Kidney. Recommended concentration: 2 µg/mL. Western Blot: Approx. 80 kDa band observed in nuclear lysates of cell line HeLa (calculated MW of 74.8 kDa according to NP_001131.3). Recommended concentration: 0.2-0.5 µg/mL. Primary incubation was 1 hour. Peptide ELISA: antibody detection limit dilution 1:32000.
Restrictions:	For Research Use only

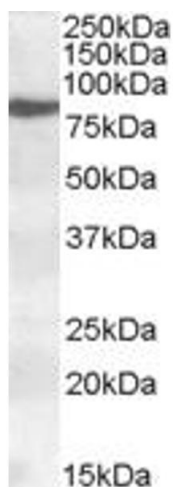
## Handling

Format:	Liquid
Concentration:	0.5 mg/mL
Buffer:	Supplied at 0.5 mg/mL in Tris saline, 0.02 % sodium azide, pH 7.3 with 0.5 % bovine serum albumin.
Preservative:	Sodium azide
Precaution of Use:	This product contains Sodium azide: a POISONOUS AND HAZARDOUS SUBSTANCE which should be handled by trained staff only.
Handling Advice:	Minimize freezing and thawing.
Storage:	-20 °C
Storage Comment:	Aliquot and store at -20°C, with minimal freeze/thawing. A working aliquot may be refrigerated at 4°C for a few weeks and still remain viable.



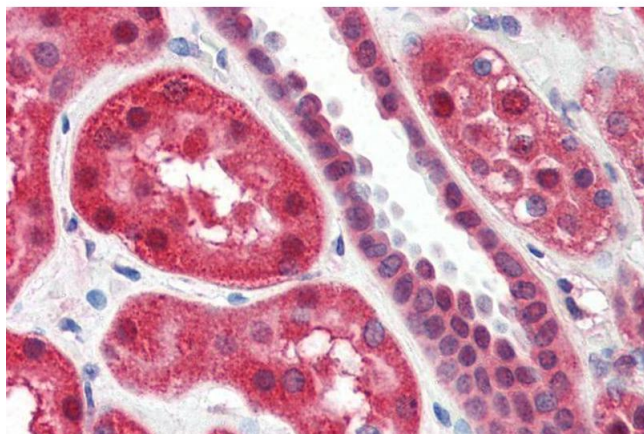
#### Immunohistochemistry

**Image 1.** ABIN334342 (2µg/ml) staining of paraffin embedded Human Skeletal Muscle. Steamed antigen retrieval with citrate buffer pH 6, AP-staining.



#### Western Blotting

**Image 2.** ABIN334342 (0.2µg/ml) staining of nuclear HeLa lysate (35µg protein in RIPA buffer). Detected by chemiluminescence.



#### Immunohistochemistry

**Image 3.** ABIN334342 (2µg/ml) staining of paraffin embedded Human Kidney. Steamed antigen retrieval with citrate buffer pH 6, AP-staining.