

Datasheet for ABIN334343

**anti-alpha 2 Antiplasmin antibody (Internal Region)**

5 Images

1 Publication

[Go to Product page](#)

## Overview

Quantity:	100 µg
Target:	alpha 2 Antiplasmin (SERPINF2)
Binding Specificity:	Internal Region
Reactivity:	Human
Host:	Goat
Clonality:	Polyclonal
Conjugate:	This alpha 2 Antiplasmin antibody is un-conjugated
Application:	Western Blotting (WB), Immunohistochemistry (IHC), ELISA, Immunofluorescence (IF), Flow Cytometry (FACS)

## Product Details

Purpose:	Alpha2-antiplasmin
Immunogen:	Peptide with sequence C-KDFLQSLKGFPRGDK, from the internal region of the protein sequence according to NP_000925.2, NP_001159393.1.
Sequence:	KDFLQSLKGF PRGDK
Isotype:	IgG
Specificity:	This antibody is expected to recognise both reported isoforms (NP_000925.2, NP_001159393.1). Reported variants represent identical protein (NP_000925.2, NP_001159392.1).
Cross-Reactivity:	Human

## Product Details

Purification:	Purified from goat serum by ammonium sulphate precipitation followed by antigen affinity chromatography using the immunizing peptide.
Grade:	Verified

## Target Details

Target:	alpha 2 Antiplasmin (SERPINF2)
Alternative Name:	SERPINF2 ( <a href="#">SERPINF2 Products</a> )
Background:	SERPINF2, serpin peptidase inhibitor, clade F (alpha-2 antiplasmin, pigment epithelium derived factor), member 2, A2AP, AAP, ALPHA-2-PI, API, PLI, alpha-2-plasmin inhibitor, serine (or cysteine) proteinase inhibitor, clade F (alpha-2 antiplasmin, pigment
Gene ID:	5345
NCBI Accession:	<a href="#">NP_000925</a> , <a href="#">NP_001159393</a>
Pathways:	<a href="#">Regulation of Systemic Arterial Blood Pressure by Hormones</a>

## Application Details

Application Notes:	<p>Immunohistochemistry: In paraffin embedded Human Liver shows spotty cytoplasm staining in hepatocytes. Recommended concentration: 3-5 µg/mL.</p> <p>Western Blot: Approx 70 kDa band observed in lysates of cell line HepG2 (calculated MW of 54.6 kDa according to NP_000925.2). The observed molecular weight is observed by other sources. Recommended concentration: 0.3-1 µg/mL. Primary incubation 1 hour at r</p> <p>Peptide ELISA: antibody detection limit dilution 1:16000.</p>
Comment:	<p><b>Immunofluorescence:</b> Strong expression of the protein seen in the cytoplasm of A431 cells. Recommended concentration: 10µg/ml.</p> <p><b>Flow Cytometry:</b> Flow cytometric analysis of A431 cells. Recommended concentration: 10ug/ml.&lt;</p>
Restrictions:	For Research Use only

## Handling

Format:	Liquid
Concentration:	0.5 mg/mL
Buffer:	Supplied at 0.5 mg/mL in Tris saline, 0.02 % sodium azide, pH 7.3 with 0.5 % bovine serum

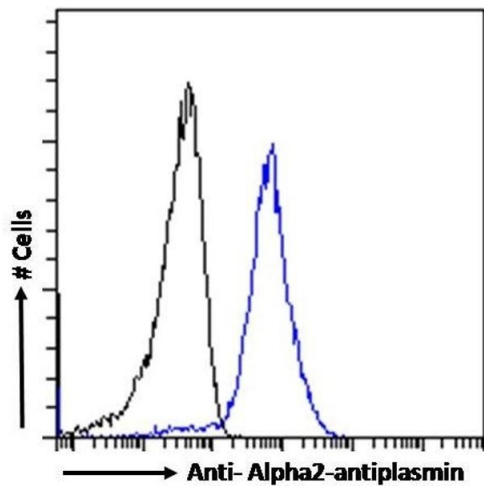
## Handling

	albumin.
Preservative:	Sodium azide
Precaution of Use:	This product contains Sodium azide: a POISONOUS AND HAZARDOUS SUBSTANCE which should be handled by trained staff only.
Handling Advice:	Minimize freezing and thawing.
Storage:	-20 °C
Storage Comment:	Aliquot and store at -20°C, with minimal freeze/thawing. A working aliquot may be refrigerated at 4°C for a few weeks and still remain viable.

## Publications

Product cited in:	Abdul, Dekkers, Ariëns, Leebeek, Rijken, Uitte de Willige: "On the localization of the cleavage site in human alpha-2-antiplasmin, involved in the generation of the non-plasminogen binding form." in: <b>Journal of thrombosis and haemostasis : JTH</b> , Vol. 18, Issue 5, pp. 1162-1170, (2020) ( <a href="#">PubMed</a> ).
-------------------	--

## Images



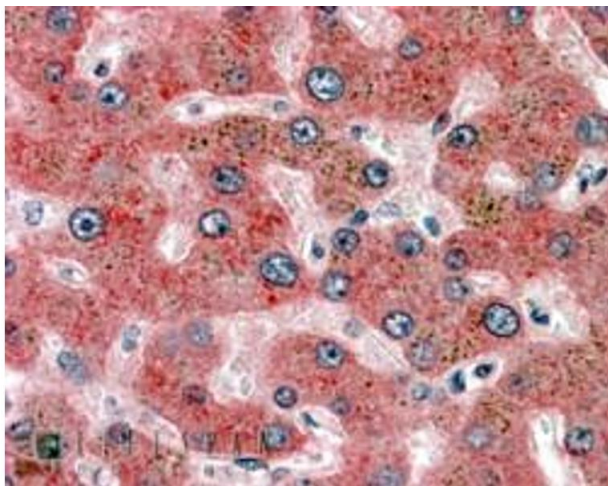
### Flow Cytometry

**Image 1.** (ABIN334343) Flow cytometric analysis of paraformaldehyde fixed A431 cells (blue line), permeabilized with 0.5 % Triton. Primary incubation 1hr (10 µg/mL) followed by Alexa Fluor 488 secondary antibody (1 µg/mL). IgG control: Unimmunized goat IgG (black line) fol



#### Western Blotting

**Image 2.** ABIN334343 (0.1µg/ml) staining of Human Duodenum lysate (35µg protein in RIPA buffer). Primary incubation was 1 hour. Detected by chemiluminescence.



#### Immunohistochemistry

**Image 3.** ABIN334343 (3.8µg/ml) staining of paraffin embedded Human Liver. Steamed antigen retrieval with citrate buffer pH 6, AP-staining.

Please check the [product details page](#) for more images. Overall 5 images are available for ABIN334343.