

Datasheet for ABIN334348
anti-APOBEC3C antibody (C-Term)



[Go to Product page](#)

2 Images

Overview

Quantity:	100 µg
Target:	APOBEC3C
Binding Specificity:	C-Term
Reactivity:	Human
Host:	Goat
Clonality:	Polyclonal
Conjugate:	This APOBEC3C antibody is un-conjugated
Application:	Western Blotting (WB), ELISA, Flow Cytometry (FACS)

Product Details

Purpose:	APOBEC3C (C-term)
Immunogen:	Peptide with sequence C-RLLKRRLRESLQ, from the C terminus of the protein sequence according to NP_055323.2.
Sequence:	RLLKRRLRES LQ
Isotype:	IgG
Cross-Reactivity:	Human
Purification:	Purified from goat serum by ammonium sulphate precipitation followed by antigen affinity chromatography using the immunizing peptide.
Grade:	Verified

Target Details

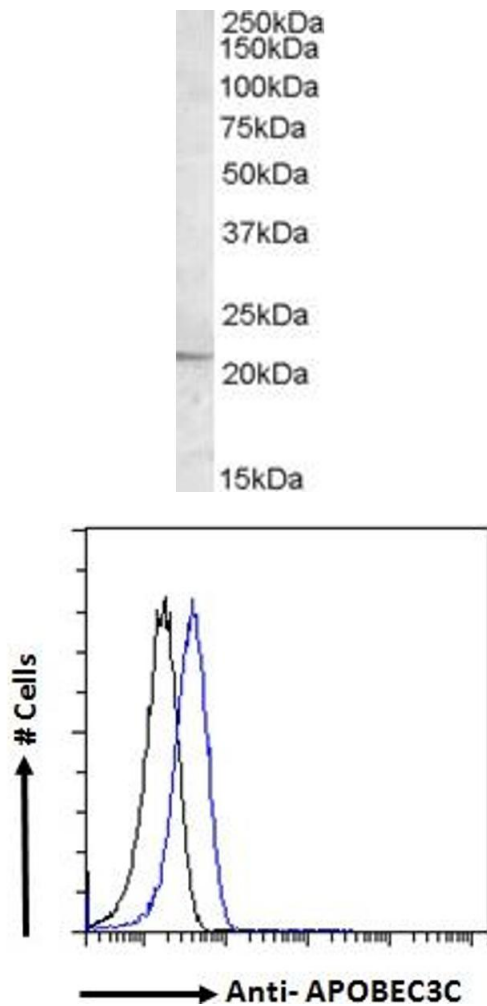
Target:	APOBEC3C
Alternative Name:	APOBEC3C (APOBEC3C Products)
Background:	APOBEC3C , apolipoprotein B mRNA editing enzyme, catalytic polypeptide-like 3C , APOBEC1L, ARDC2, ARDC4, ARP5, MGC19485, PBI, bK150C2.3
Gene ID:	27350
NCBI Accession:	NP_055323

Application Details

Application Notes:	Western Blot: Approx. 22 kDa band observed in lysates of cell line Daudi (calculated MW of 22.8 kDa according to NP_055323.2). Recommended concentration: 0.5-1.5 µg/mL. Primary incubation 1 hour at room temperature. This antibody has been successfully used Peptide ELISA: antibody detection limit dilution 1:1000.
Comment:	Flow Cytometry: Flow cytometric analysis of HeLa cells. Recommended concentration: 10µg/ml.
Restrictions:	For Research Use only

Handling

Format:	Liquid
Concentration:	0.5 mg/mL
Buffer:	Supplied at 0.5 mg/mL in Tris saline, 0.02 % sodium azide, pH 7.3 with 0.5 % bovine serum albumin.
Preservative:	Sodium azide
Precaution of Use:	This product contains Sodium azide: a POISONOUS AND HAZARDOUS SUBSTANCE which should be handled by trained staff only.
Handling Advice:	Minimize freezing and thawing.
Storage:	-20 °C
Storage Comment:	Aliquot and store at -20°C, with minimal freeze/thawing. A working aliquot may be refrigerated at 4°C for a few weeks and still remain viable.



Western Blotting

Image 1. ABIN334348 (0.5 μ g/ml) staining of Daudi cell lysate (35 μ g protein in RIPA buffer). Detected by chemiluminescence.

Flow Cytometry

Image 2. ABIN334348 Flow cytometric analysis of paraformaldehyde fixed HeLa cells (blue line), permeabilized with 0.5% Triton. Primary incubation 1hr (10 μ g/ml) followed by Alexa Fluor 488 secondary antibody (1 μ g/ml). IgG control: Unimmunized goat IgG (black line) fol