



[Go to Product page](#)

Datasheet for ABIN334365
anti-BTLA antibody (C-Term)

1 Image

Overview

Quantity:	100 µg
Target:	BTLA
Binding Specificity:	C-Term
Reactivity:	Mouse
Host:	Goat
Clonality:	Polyclonal
Conjugate:	This BTLA antibody is un-conjugated
Application:	Western Blotting (WB), ELISA

Product Details

Purpose:	BTLA
Immunogen:	Peptide with sequence KEAPTEYASICVRS, from the C Terminus of the protein sequence according to NP_861445.3, NP_001078826.1.
Sequence:	KEAPTEYASI CVRS
Isotype:	IgG
Specificity:	This antibody is expected to recognize both reported isoforms (NP_861445.3, NP_001078826.1).
Cross-Reactivity:	Human, Mouse, Rat
Purification:	Purified from goat serum by ammonium sulphate precipitation followed by antigen affinity chromatography using the immunizing peptide.

Product Details

Grade: Verified

Target Details

Target: BTLA

Alternative Name: BTLA ([BTLA Products](#))

Background: BTLA, B and T lymphocyte associated, BTLA1, CD272, FLJ16065, MGC129743, B and T lymphocyte attenuator

Gene ID: 151888, 208154, 407756

NCBI Accession: [NP_861445](#), [NP_001078826](#)

Pathways: [Cancer Immune Checkpoints](#)

Application Details

Application Notes: Western Blot: Approx. 35 kDa band observed in Mouse Spleen lysates (calculated MW of 32.8 kDa according to Human NP_861445.3 and of 34.2 kDa according to Mouse NP_001032808.2). Recommended concentration: 1-3 µg/mL.
Peptide ELISA: antibody detection limit dilution 1:4000.

Restrictions: For Research Use only

Handling

Format: Liquid

Concentration: 0.5 mg/mL

Buffer: Supplied at 0.5 mg/mL in Tris saline, 0.02 % sodium azide, pH 7.3 with 0.5 % bovine serum albumin.

Preservative: Sodium azide

Precaution of Use: This product contains Sodium azide: a POISONOUS AND HAZARDOUS SUBSTANCE which should be handled by trained staff only.

Handling Advice: Minimize freezing and thawing.

Storage: -20 °C

Storage Comment: Aliquot and store at -20°C, with minimal freeze/thawing. A working aliquot may be refrigerated at 4°C for a few weeks and still remain viable.

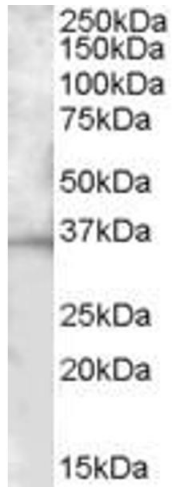


Image 1. ABIN334365 (1 μ g/ml) staining of Mouse Spleen lysate (35 μ g protein in RIPA buffer). Primary incubation was 1 hour. Detected by chemiluminescence.