

Datasheet for ABIN334371
anti-CEP290 antibody (Internal Region)

3 Images

[Go to Product page](#)

Overview

Quantity:	100 µg
Target:	CEP290
Binding Specificity:	Internal Region
Reactivity:	Human
Host:	Goat
Clonality:	Polyclonal
Conjugate:	This CEP290 antibody is un-conjugated
Application:	ELISA, Immunohistochemistry (IHC), Immunofluorescence (IF)

Product Details

Purpose:	CEP290 / NPHP6
Immunogen:	Peptide with sequence C-QSGAESTIPDADQ, from the internal region of the protein sequence according to NP_079390.3.
Sequence:	QSGAESTIPD ADQ
Isotype:	IgG
Cross-Reactivity:	Human
Purification:	Purified from goat serum by ammonium sulphate precipitation followed by antigen affinity chromatography using the immunizing peptide.
Grade:	Verified

Target Details

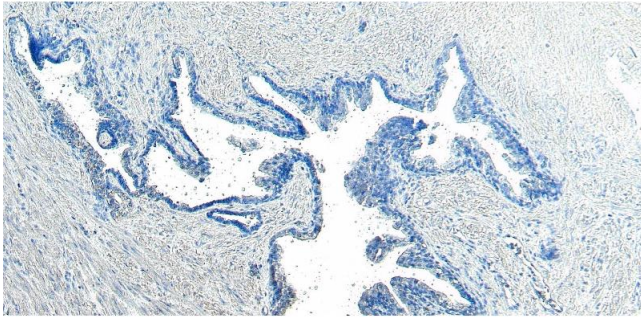
Target:	CEP290
Alternative Name:	CEP290 (CEP290 Products)
Background:	CEP290, centrosomal protein 290 kDa, 3H11Ag, FLJ13615, FLJ21979, JBTS5, JBTS6, KIAA0373, LCA10, MKS4, NPHP6, SLSN6, rd16, CTCL tumor antigen se2-2, monoclonal antibody 3H11 antigen, nephrocystin 6, nephrocystin-6, nephrocytsin-6, prostate cancer antigen T2
Gene ID:	80184
NCBI Accession:	NP_079390
Pathways:	cAMP Metabolic Process , M Phase

Application Details

Application Notes:	Immunohistochemistry: Paraffin embedded Human Prostate. Recommended concentration: 4-8 µg/mL. Peptide ELISA: antibody detection limit dilution 1:8000.
Comment:	Immunofluorescence: Strong expression of the protein seen within the centrosome of HeLa cells. Recommended concentration: 10µg/ml.
Restrictions:	For Research Use only

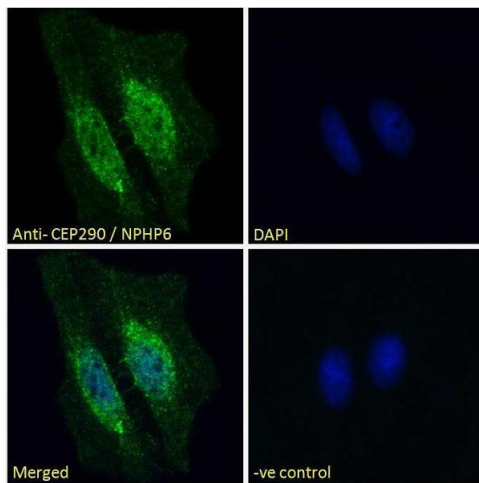
Handling

Format:	Liquid
Concentration:	0.5 mg/mL
Buffer:	Supplied at 0.5 mg/mL in Tris saline, 0.02 % sodium azide, pH 7.3 with 0.5 % bovine serum albumin.
Preservative:	Sodium azide
Precaution of Use:	This product contains Sodium azide: a POISONOUS AND HAZARDOUS SUBSTANCE which should be handled by trained staff only.
Handling Advice:	Minimize freezing and thawing.
Storage:	-20 °C
Storage Comment:	Aliquot and store at -20°C, with minimal freeze/thawing. A working aliquot may be refrigerated at 4°C for a few weeks and still remain viable.



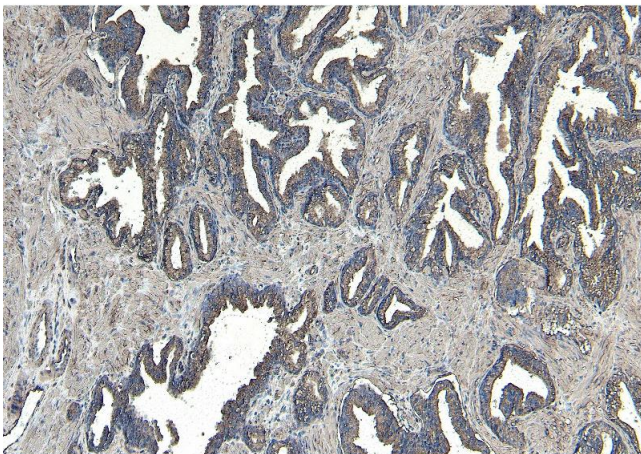
Immunohistochemistry

Image 1. ABIN334371 Negative Control showing staining of paraffin embedded Human Prostate, with no primary antibody.



Immunofluorescence

Image 2. ABIN334371 Immunofluorescence analysis of paraformaldehyde fixed HeLa cells, permeabilized with 0.15% Triton. Primary incubation 1hr (10ug/ml) followed by Alexa Fluor 488 secondary antibody (2ug/ml), showing nuclear and centrosome staining. The nuclear stain is DAPI (blue). Negative control: Unimmunized goat IgG (10ug/ml) followed by Alexa Fluor 488 secondary antibody (2ug/ml).



Immunohistochemistry

Image 3. ABIN334371 (8µg/ml) staining of paraffin embedded Human Prostate. Heat induced antigen retrieval with citrate buffer pH 6, HRP-staining.