

Datasheet for ABIN334393
anti-ESRRG antibody (Internal Region)[Go to Product page](#)

2 Images

Overview

Quantity:	100 µg
Target:	ESRRG
Binding Specificity:	Internal Region
Reactivity:	Human
Host:	Goat
Clonality:	Polyclonal
Conjugate:	This ESRRG antibody is un-conjugated
Application:	Western Blotting (WB), ELISA

Product Details

Purpose:	ESRRG
Immunogen:	Peptide with sequence CRMSNKDRHIDS, from the internal region of the protein sequence according to NP_001429.2, NP_996317.1, NP_996318.1.
Sequence:	CRMSNKDRHI DS
Isotype:	IgG
Specificity:	This antibody is expected to recognise the reported isoform NP_001429.2.
Cross-Reactivity:	Dog, Human, Mouse
Purification:	Purified from goat serum by ammonium sulphate precipitation followed by antigen affinity chromatography using the immunizing peptide.
Grade:	Verified

Target Details

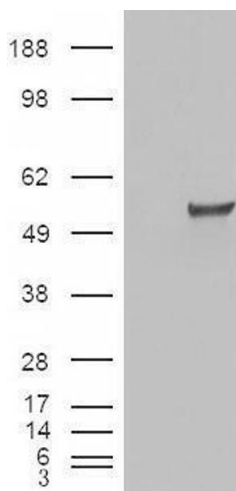
Target:	ESRRG
Alternative Name:	ESRRG (ESRRG Products)
Background:	ESRRG, DKFZp781L1617, Estrogen-related receptor gamma, ERR3, FLJ16023, KIAA0832, NR3B3
Gene ID:	2104, 26381
NCBI Accession:	NP_001429 , NP_996317 , NP_996318
Pathways:	Nuclear Receptor Transcription Pathway , Retinoic Acid Receptor Signaling Pathway , Steroid Hormone Mediated Signaling Pathway

Application Details

Application Notes:	Western Blot: Approx. 50 kDa band observed in Human Brain (Cerebellum) and Breast lysates (calculated MW of 51.3 kDa according to NP_NP_001429.2). In transfected HEK293 transiently expressing ESRRG a band of approx. 52 kDa is observed. This band is not observed. Peptide ELISA: antibody detection limit dilution 1:16000.
Restrictions:	For Research Use only

Handling

Format:	Liquid
Concentration:	0.5 mg/mL
Buffer:	Supplied at 0.5 mg/mL in Tris saline, 0.02 % sodium azide, pH 7.3 with 0.5 % bovine serum albumin.
Preservative:	Sodium azide
Precaution of Use:	This product contains Sodium azide: a POISONOUS AND HAZARDOUS SUBSTANCE which should be handled by trained staff only.
Handling Advice:	Minimize freezing and thawing.
Storage:	-20 °C
Storage Comment:	Aliquot and store at -20°C, with minimal freeze/thawing. A working aliquot may be refrigerated at 4°C for a few weeks and still remain viable.



Western Blotting

Image 1. HEK293 overexpressing ESRRG (ABIN5424069) and probed with ABIN334393 (mock transfection in first lane).



Image 2. ABIN334393 (0.2µg/ml) staining of Human Breast lysate (35µg protein in RIPA buffer). Primary incubation was 1 hour. Detected by chemiluminescence.