



[Go to Product page](#)

Datasheet for ABIN334394

## anti-FAIM antibody (Internal Region)

### 2 Images

#### Overview

Quantity:	100 µg
Target:	FAIM
Binding Specificity:	Internal Region
Reactivity:	Human
Host:	Goat
Clonality:	Polyclonal
Conjugate:	This FAIM antibody is un-conjugated
Application:	Western Blotting (WB), ELISA, Immunohistochemistry (IHC)

#### Product Details

Purpose:	FAIM1
Immunogen:	Peptide with sequence C-KKYMEDRSKTTN, from the internal region of the protein sequence according to NP_001028202.1, NP_001028203.1, NP_001028204.1, NP_060617.1.
Sequence:	KKYMEDRSKT TN
Isotype:	IgG
Specificity:	This antibody is expected to recognise all reported isoforms (NP_001028202.1, NP_001028203.1, NP_001028204.1, NP_060617.1).
Cross-Reactivity:	Dog, Human, Mouse, Rat
Purification:	Purified from goat serum by ammonium sulphate precipitation followed by antigen affinity chromatography using the immunizing peptide.

## Product Details

---

Grade: Verified

## Target Details

---

Target: FAIM

Alternative Name: FAIM ([FAIM Products](#))

Background: FAIM1, FAIM, Fas apoptotic inhibitory molecule

Gene ID: 55179, 23873, 140930

NCBI Accession: [NP\\_001028202](#), [NP\\_001028203](#), [NP\\_001028204](#), [NP\\_060617](#)

## Application Details

---

Application Notes: Immunohistochemistry: In paraffin embedded Human Placenta shows cytoplasm staining of trophoblasts. Recommended concentration, 2-3 µg/mL.  
Western Blot: Approx 25 kDa band observed in Human Lymph Node lysates (calculated MW of 24.0 kDa according to NP\_001028202.1). Recommended concentration: 0.5-1 µg/mL.  
Peptide ELISA: antibody detection limit dilution 1:32000.

Restrictions: For Research Use only

## Handling

---

Format: Liquid

Concentration: 0.5 mg/mL

Buffer: Supplied at 0.5 mg/mL in Tris saline, 0.02 % sodium azide, pH 7.3 with 0.5 % bovine serum albumin.

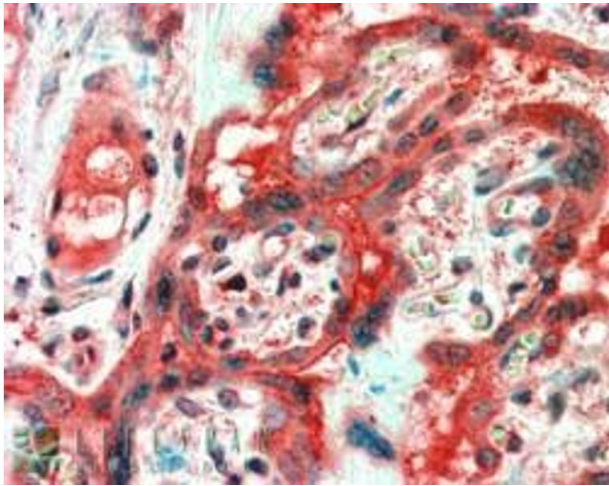
Preservative: Sodium azide

Precaution of Use: This product contains Sodium azide: a POISONOUS AND HAZARDOUS SUBSTANCE which should be handled by trained staff only.

Handling Advice: Minimize freezing and thawing.

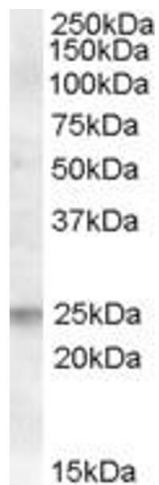
Storage: -20 °C

Storage Comment: Aliquot and store at -20°C, with minimal freeze/thawing. A working aliquot may be refrigerated at 4°C for a few weeks and still remain viable.



### Immunohistochemistry

**Image 1.** ABIN334394 (2.5µg/ml) staining of paraffin embedded Human Placenta. Steamed antigen retrieval with citrate buffer pH 6, AP-staining.



**Image 2.** ABIN334394 (0.5µg/ml) staining of Human Lymph Node lysate (35µg protein in RIPA buffer). Primary incubation was 1 hour. Detected by chemiluminescence.