

Datasheet for ABIN334401  
**anti-FTH1 antibody (C-Term)**

## 6 Images

[Go to Product page](#)

## Overview

Quantity:	100 µg
Target:	FTH1
Binding Specificity:	C-Term
Reactivity:	Human
Host:	Goat
Clonality:	Polyclonal
Conjugate:	This FTH1 antibody is un-conjugated
Application:	Western Blotting (WB), Immunohistochemistry (IHC), ELISA

## Product Details

Purpose:	FTH1
Immunogen:	C-DKHTLGDSDNES
Sequence:	DKHTLGSDN ES
Isotype:	IgG
Cross-Reactivity:	Human
Purification:	Purified from goat serum by ammonium sulphate precipitation followed by antigen affinity chromatography using the immunizing peptide.
Grade:	Verified

## Target Details

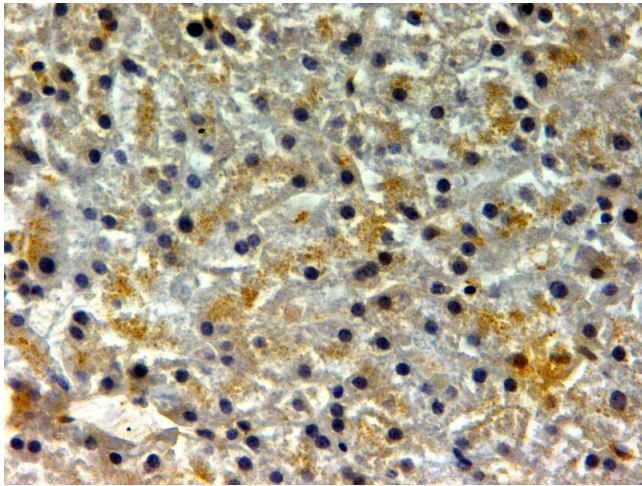
Target:	FTH1
Alternative Name:	FTH1 ( <a href="#">FTH1 Products</a> )
Background:	FTH1, ferritin, heavy polypeptide 1, FHC, FTH, FTHL6, MGC104426, PIG15, PLIF, apoferritin, placenta immunoregulatory factor, proliferation-inducing protein 15
Gene ID:	2495
NCBI Accession:	<a href="#">NP_002023</a>
Pathways:	<a href="#">Transition Metal Ion Homeostasis</a>

## Application Details

Application Notes:	<p>Immunohistochemistry: In paraffin embedded Human Liver shows staining in the cytosol in some hepatocytes. Recommended concentration: 2-4 µg/mL.</p> <p>Western Blot: Approx. 22 kDa band observed in Human Brain (Cerebellum), Liver and Placenta lysates (calculated MW of 21.2 kDa according to NP_002023.2). Recommended concentration: 1-3 µg/mL. Primary incubation was 1 hour.</p> <p>Peptide ELISA: antibody detection limit dilution 1:4000.</p>
Restrictions:	For Research Use only

## Handling

Format:	Liquid
Concentration:	0.5 mg/mL
Buffer:	Supplied at 0.5 mg/mL in Tris saline, 0.02 % sodium azide, pH 7.3 with 0.5 % bovine serum albumin.
Preservative:	Sodium azide
Precaution of Use:	This product contains Sodium azide: a POISONOUS AND HAZARDOUS SUBSTANCE which should be handled by trained staff only.
Handling Advice:	Minimize freezing and thawing.
Storage:	-20 °C
Storage Comment:	Aliquot and store at -20°C, with minimal freeze/thawing. A working aliquot may be refrigerated at 4°C for a few weeks and still remain viable.

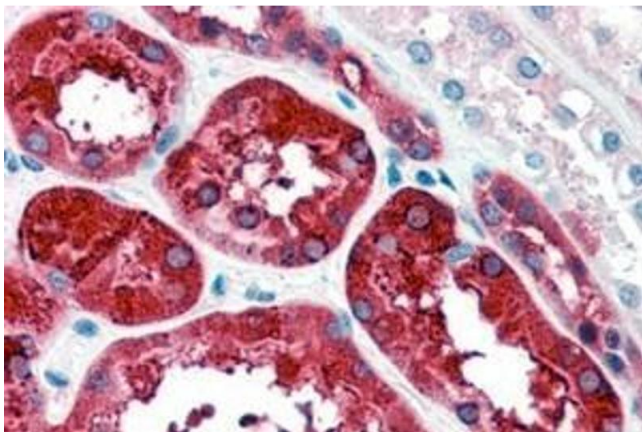


#### Immunohistochemistry

**Image 1.** ABIN334401 (2µg/ml) staining of paraffin embedded Human Liver. Steamed antigen retrieval with citrate buffer pH 6, HRP-staining.



**Image 2.** ABIN334401 (0.05µg/ml) staining of Human Placenta lysate (35µg protein in RIPA buffer). Primary incubation was 1 hour. Detected by chemiluminescence.



#### Immunohistochemistry

**Image 3.** ABIN334401 (4µg/ml) staining of paraffin embedded Human Kidney. Steamed antigen retrieval with citrate buffer pH 6, AP-staining. This data was obtained using a previous batch.

Please check the [product details page](#) for more images. Overall 6 images are available for ABIN334401.