

Datasheet for ABIN334402  
**anti-FTL antibody (C-Term)**[Go to Product page](#)

## 7 Images

## Overview

Quantity:	100 µg
Target:	FTL
Binding Specificity:	C-Term
Reactivity:	Human, Mouse, Rat
Host:	Goat
Clonality:	Polyclonal
Conjugate:	This FTL antibody is un-conjugated
Application:	Western Blotting (WB), Immunohistochemistry (IHC), ELISA

## Product Details

Purpose:	FTL
Immunogen:	Peptide with sequence C-GEYLFERLTLKHD, from the C Terminus of the protein sequence according to NP_000137.2.
Sequence:	GEYLFERLTL KHD
Isotype:	IgG
Cross-Reactivity:	Cow, Dog, Human, Mouse, Rat
Purification:	Purified from goat serum by ammonium sulphate precipitation followed by antigen affinity chromatography using the immunizing peptide.
Grade:	Verified

## Target Details

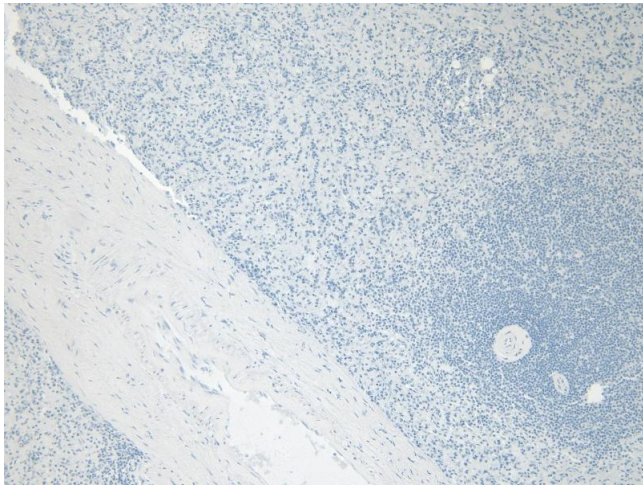
Target:	FTL
Alternative Name:	FTL ( <a href="#">FTL Products</a> )
Background:	FTL, ferritin, light polypeptide, MGC71996, L apoferritin, ferritin L subunit, ferritin L-chain, ferritin light chain, ferritin light polypeptide-like 3
Gene ID:	2512, 14325, 29292
NCBI Accession:	<a href="#">NP_000137</a>
Pathways:	<a href="#">Transition Metal Ion Homeostasis</a>

## Application Details

Application Notes:	<p>Immunohistochemistry: Paraffin embedded Human Spleen. Recommended concentration: 4-6 µg/mL.</p> <p>Western Blot: Approx. 20 kDa band observed in Human Brain (Cerebellum), Liver, Placenta and 22 kDa in Mouse and Rat Brain lysates (calculated MW of 20.0 kDa according to NP_000137.2). Recommended concentration: 0.3-1.0 µg/mL. Primary incubation was 1 hour.</p> <p>Peptide ELISA: antibody detection limit dilution 1:32000.</p>
Restrictions:	For Research Use only

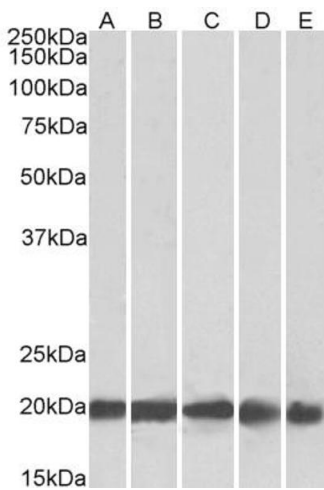
## Handling

Format:	Liquid
Concentration:	0.5 mg/mL
Buffer:	Supplied at 0.5 mg/mL in Tris saline, 0.02 % sodium azide, pH 7.3 with 0.5 % bovine serum albumin.
Preservative:	Sodium azide
Precaution of Use:	This product contains Sodium azide: a POISONOUS AND HAZARDOUS SUBSTANCE which should be handled by trained staff only.
Handling Advice:	Minimize freezing and thawing.
Storage:	-20 °C
Storage Comment:	Aliquot and store at -20°C, with minimal freeze/thawing. A working aliquot may be refrigerated at 4°C for a few weeks and still remain viable.



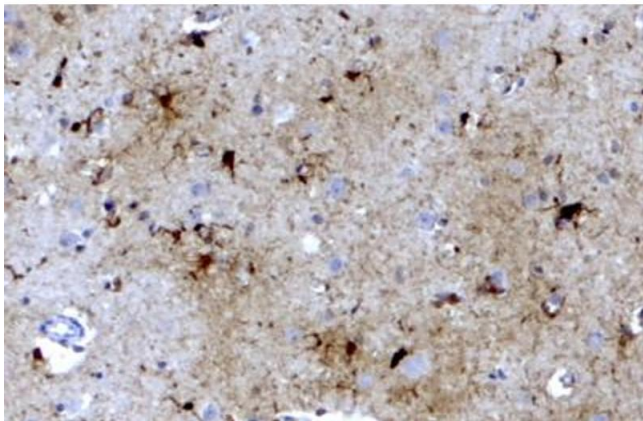
#### Immunohistochemistry

**Image 1.** (ABIN334402) Negative Control showing staining of paraffin embedded Human Spleen, with no primary antibody.



#### Western Blotting

**Image 2.** ABIN334402 (0.3µg/ml) staining of Human Brain (Cerebellum) (A), Liver (B), Human Placenta (C) 22kDa in MBR (D), RBR (E) lysate (35µg protein in RIPA buffer). Primary incubation was 1 hour. Detected by chemiluminescence.



#### Immunohistochemistry

**Image 3.** ABIN334402 (3.8µg/ml) staining of paraffin embedded Human Brain Cortex. Steamed antigen retrieval with citrate buffer pH 6, HRP-staining. This data is from a previous batch, not on sale.

Please check the [product details page](#) for more images. Overall 7 images are available for ABIN334402.