

Datasheet for ABIN334408
anti-GBX2 antibody (Internal Region)

8 Images

[Go to Product page](#)

Overview

Quantity:	100 µg
Target:	GBX2
Binding Specificity:	Internal Region
Reactivity:	Human
Host:	Goat
Clonality:	Polyclonal
Conjugate:	This GBX2 antibody is un-conjugated
Application:	ELISA, Immunohistochemistry (IHC), Immunofluorescence (IF)

Product Details

Purpose:	GBX2
Immunogen:	Peptide with sequence C-QGKDESKVEDDPK, from the internal region of the protein sequence according to NP_001476.2.
Sequence:	QGKDESKVED DPK
Isotype:	IgG
Cross-Reactivity:	Cow, Dog, Human, Mouse, Pig, Rat
Purification:	Purified from goat serum by ammonium sulphate precipitation followed by antigen affinity chromatography using the immunizing peptide.
Grade:	Verified

Target Details

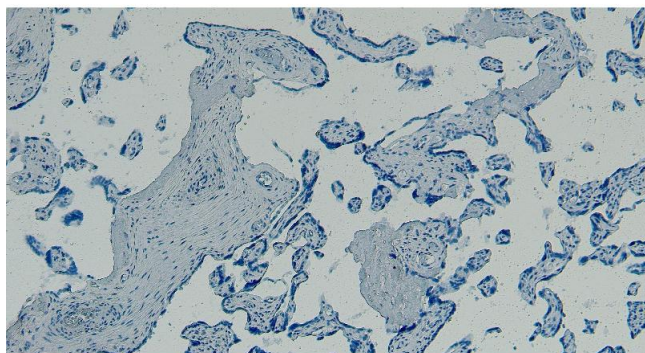
Target:	GBX2
Alternative Name:	GBX2 (GBX2 Products)
Background:	GBX2, gastrulation brain homeobox 2 , gastrulation brain homeo box 2
Gene ID:	2637, 14472, 114500
NCBI Accession:	NP_001476
Pathways:	Dopaminergic Neurogenesis

Application Details

Application Notes:	Immunohistochemistry: Paraffin embedded Human Brain (Cortex) and Placenta. Recommended concentration: 5 µg/mL. Peptide ELISA: antibody detection limit dilution 1:8000.
Comment:	Immunofluorescence: Strong expression of the protein seen in the nucleus of HeLa and U2OS cells. Recommended concentration: 10µg/ml.
Restrictions:	For Research Use only

Handling

Format:	Liquid
Concentration:	0.5 mg/mL
Buffer:	Supplied at 0.5 mg/mL in Tris saline, 0.02 % sodium azide, pH 7.3 with 0.5 % bovine serum albumin.
Preservative:	Sodium azide
Precaution of Use:	This product contains Sodium azide: a POISONOUS AND HAZARDOUS SUBSTANCE which should be handled by trained staff only.
Handling Advice:	Minimize freezing and thawing.
Storage:	-20 °C
Storage Comment:	Aliquot and store at -20°C, with minimal freeze/thawing. A working aliquot may be refrigerated at 4°C for a few weeks and still remain viable.

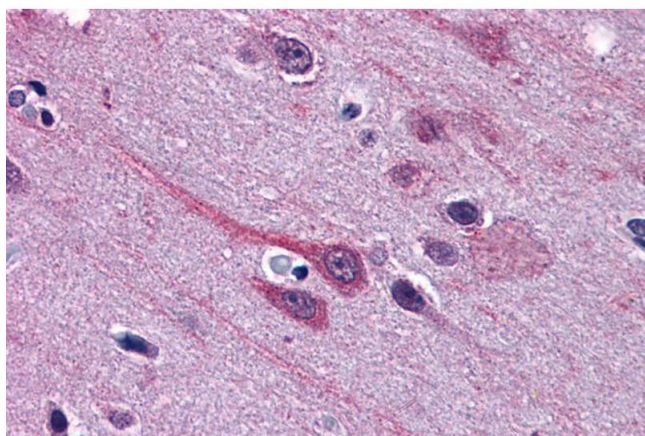


Immunohistochemistry

Image 1. ABIN334408 Negative Control showing staining of paraffin embedded Human Placenta, with no primary antibody.



Image 2. ABIN334408 (0.1 µg/ml) staining of Jurkat cell lysate (35 µg protein in RIPA buffer). Primary incubation was 1 hour. Detected by chemiluminescence.



Immunohistochemistry

Image 3. ABIN334408 (3.75 µg/ml) staining of paraffin embedded Human Cortex. Steamed antigen retrieval with citrate buffer pH 6, AP-staining.

Please check the [product details page](#) for more images. Overall 8 images are available for ABIN334408.