

Datasheet for ABIN334411
anti-GPR3 antibody (Internal Region)[Go to Product page](#)

1 Image

Overview

Quantity:	100 µg
Target:	GPR3
Binding Specificity:	Internal Region
Reactivity:	Human
Host:	Goat
Clonality:	Polyclonal
Conjugate:	This GPR3 antibody is un-conjugated
Application:	ELISA, Western Blotting (WB)

Product Details

Purpose:	GPR3
Immunogen:	Peptide with sequence C-LQRHLLPASH, from the internal region of the protein sequence according to NP_005272.1.
Sequence:	LQRHLLPASH
Isotype:	IgG
Specificity:	This antibody is not expected to cross-react with GPR6 and GPR12.
Cross-Reactivity:	Dog, Human, Mouse, Rat
Purification:	Purified from goat serum by ammonium sulphate precipitation followed by antigen affinity chromatography using the immunizing peptide.
Grade:	Verified

Target Details

Target:	GPR3
Alternative Name:	GPR3 (GPR3 Products)
Background:	GPR3, G protein-coupled receptor 3 , ACCA, OTTHUMP00000043209, adenylate cyclase constitutive activator
Gene ID:	2827, 14748, 266769
NCBI Accession:	NP_005272
Pathways:	cAMP Metabolic Process

Application Details

Application Notes:	Western Blot: Approx 35 kDa band observed in Human Brain (Hippocampus and Frontal Cortex) lysates (calculated MW of 35.0 kDa according to NP_005272.1). Recommended concentration: 0.3-1 µg/mL. An additional band of unknown identity was also consistently observed. Peptide ELISA: antibody detection limit dilution 1:32000.
Restrictions:	For Research Use only

Handling

Format:	Liquid
Concentration:	0.5 mg/mL
Buffer:	Supplied at 0.5 mg/mL in Tris saline, 0.02 % sodium azide, pH 7.3 with 0.5 % bovine serum albumin.
Preservative:	Sodium azide
Precaution of Use:	This product contains Sodium azide: a POISONOUS AND HAZARDOUS SUBSTANCE which should be handled by trained staff only.
Handling Advice:	Minimize freezing and thawing.
Storage:	-20 °C
Storage Comment:	Aliquot and store at -20°C, with minimal freeze/thawing. A working aliquot may be refrigerated at 4°C for a few weeks and still remain viable.

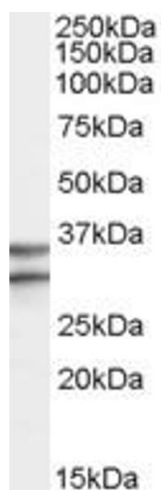


Image 1. ABIN334411 (0.3µg/ml) staining of Human Brain (Frontal Cortex) lysate (35µg protein in RIPA buffer). Primary incubation was 1 hour. Detected by chemiluminescence.