



[Go to Product page](#)

Datasheet for ABIN334414

## anti-GSTM3 antibody (Internal Region)

### 1 Image

#### Overview

Quantity:	100 µg
Target:	GSTM3
Binding Specificity:	Internal Region
Reactivity:	Human
Host:	Goat
Clonality:	Polyclonal
Conjugate:	This GSTM3 antibody is un-conjugated
Application:	ELISA, Immunofluorescence (IF)

#### Product Details

Purpose:	GSTM3
Immunogen:	Peptide with sequence RTQLIRLCYSSDHE, from the internal region of the protein sequence according to NP_000840.2.
Sequence:	RTQLIRLCYS SDHE
Isotype:	IgG
Cross-Reactivity:	Human
Purification:	Purified from goat serum by ammonium sulphate precipitation followed by antigen affinity chromatography using the immunizing peptide.
Grade:	Verified

## Target Details

---

Target:	GSTM3
Alternative Name:	GSTM3 ( <a href="#">GSTM3 Products</a> )
Background:	GSTM3, glutathione S-transferase M3 (brain), GST5N: GSTB, GSTM3-3, GTM3, MGC3310, MGC3704, GST class-mu 3, S-(hydroxyalkyl)glutathione lyase M3, brain GSTN: brain type mu-glutathione S-transferase, glutathione S-alkyltransferase M3, glutathione S-aralkylt
Gene ID:	2947
NCBI Accession:	<a href="#">NP_000840</a>

## Application Details

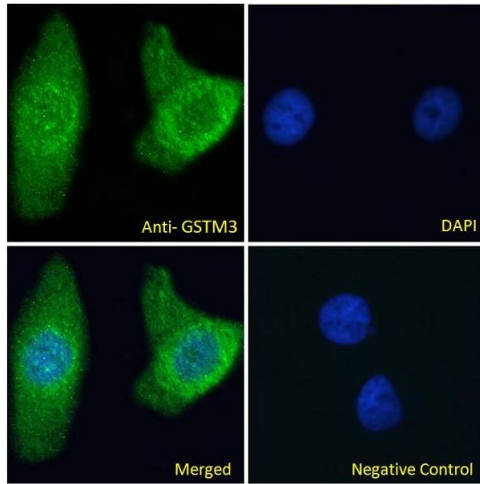
---

Application Notes:	Peptide ELISA: antibody detection limit dilution 1:4000.
Comment:	<b>Immunofluorescence:</b> Strong expression of the protein seen in the mitochondria/ cytoplasm of HeLa cells. Recommended concentration: 10µg/ml.
Restrictions:	For Research Use only

## Handling

---

Format:	Liquid
Concentration:	0.5 mg/mL
Buffer:	Supplied at 0.5 mg/mL in Tris saline, 0.02 % sodium azide, pH 7.3 with 0.5 % bovine serum albumin.
Preservative:	Sodium azide
Precaution of Use:	This product contains Sodium azide: a POISONOUS AND HAZARDOUS SUBSTANCE which should be handled by trained staff only.
Handling Advice:	Minimize freezing and thawing.
Storage:	-20 °C
Storage Comment:	Aliquot and store at -20°C, with minimal freeze/thawing. A working aliquot may be refrigerated at 4°C for a few weeks and still remain viable.



### Immunofluorescence

**Image 1.** ABIN334414 Immunofluorescence analysis of paraformaldehyde fixed HeLa cells, permeabilized with 0.15% Triton. Primary incubation 1hr (10ug/ml) followed by Alexa Fluor 488 secondary antibody (2ug/ml), showing Mitochondria/cytoplasmic staining. The nuclear sta