

Datasheet for ABIN334416  
**anti-HAP1 antibody (Internal Region)**[Go to Product page](#)

## 2 Images

## Overview

Quantity:	100 µg
Target:	HAP1
Binding Specificity:	Internal Region
Reactivity:	Human
Host:	Goat
Clonality:	Polyclonal
Conjugate:	This HAP1 antibody is un-conjugated
Application:	Western Blotting (WB), ELISA, Immunohistochemistry (IHC)

## Product Details

Purpose:	HAP1
Immunogen:	Peptide with sequence C-RYDFRYSEDREQ, from the internal region of the protein sequence according to NP_003940.2, NP_817084.1.
Sequence:	RYDFRYSEDR EQ
Isotype:	IgG
Specificity:	This antibody is expected to recognize all reported isoforms (NP_003940.1, NP_817084.1)
Cross-Reactivity:	Human
Purification:	Purified from goat serum by ammonium sulphate precipitation followed by antigen affinity chromatography using the immunizing peptide.
Grade:	Verified

## Target Details

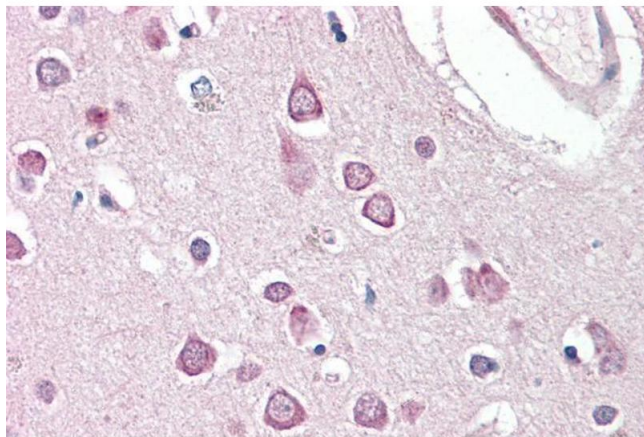
Target:	HAP1
Alternative Name:	HAP1 ( <a href="#">HAP1 Products</a> )
Background:	HAP1, huntingtin-associated protein 1 (neuroan 1), HAP2, HIP5, HLP, hHLP1, huntingtin-associated protein 1, huntingtin-associated protein 2, neuroan 1
Gene ID:	9001
NCBI Accession:	<a href="#">NP_003940</a> , <a href="#">NP_817084</a>
Pathways:	<a href="#">Cell RedoxHomeostasis</a> , <a href="#">Smooth Muscle Cell Migration</a> , <a href="#">Positive Regulation of Response to DNA Damage Stimulus</a>

## Application Details

Application Notes:	Immunohistochemistry: Paraffin embedded Human Brain (Cortex). Recommended concentration: 3.75 µg/mL. Western Blot: Approx 70 kDa band observed in Human Brain (Frontal Cortex and Hippocampus) lysates (calculated MW of 69.6 kDa according to NP_817084.1). Recommended concentration: 0.1-0.3 µg/mL. Primary incubation was 1 hour. An additional band of unknown i Peptide ELISA: antibody detection limit dilution 1:32000.
Restrictions:	For Research Use only

## Handling

Format:	Liquid
Concentration:	0.5 mg/mL
Buffer:	Supplied at 0.5 mg/mL in Tris saline, 0.02 % sodium azide, pH 7.3 with 0.5 % bovine serum albumin.
Preservative:	Sodium azide
Precaution of Use:	This product contains Sodium azide: a POISONOUS AND HAZARDOUS SUBSTANCE which should be handled by trained staff only.
Handling Advice:	Minimize freezing and thawing.
Storage:	-20 °C
Storage Comment:	Aliquot and store at -20°C, with minimal freeze/thawing. A working aliquot may be refrigerated at 4°C for a few weeks and still remain viable.



#### Immunohistochemistry

**Image 1.** ABIN334416 (3.75µg/ml) staining of paraffin embedded Human Cortex. Steamed antigen retrieval with citrate buffer pH 6, AP-staining.



#### Western Blotting

**Image 2.** ABIN334416 (0.1µg/ml) staining of Human Brain (Hippocampus) lysate (35µg protein in RIPA buffer). Detected by chemiluminescence.