

Datasheet for ABIN334421

**anti-HYAL1 antibody (Internal Region)**

## 4 Images

[Go to Product page](#)

## Overview

Quantity:	100 µg
Target:	HYAL1
Binding Specificity:	Internal Region
Reactivity:	Human
Host:	Goat
Clonality:	Polyclonal
Application:	Immunohistochemistry (IHC), ELISA, Immunofluorescence (IF), Flow Cytometry (FACS)

## Product Details

Purpose:	Hyaluronidase 1
Immunogen:	Peptide with sequence ENTRTKESCQAIKEY, from the internal region of the protein sequence according to NP_009296.1, NP_695014.1, NP_695015.1, NP_695017.1,.
Sequence:	ENTRTKESCQ AIKEY
Isotype:	IgG
Specificity:	This antibody is expected to recognise isoform 1 (NP_009296.1), isoform 3 (NP_695015.1) and isoform 5 (NP_695017.1).
Cross-Reactivity:	Cow, Dog, Human, Mouse, Pig, Rat
Purification:	Purified from goat serum by ammonium sulphate precipitation followed by antigen affinity chromatography using the immunizing peptide.
Grade:	Verified

## Target Details

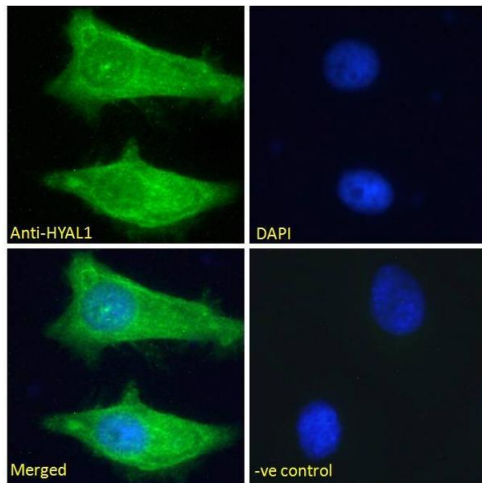
Target:	HYAL1
Alternative Name:	HYAL1 ( <a href="#">HYAL1 Products</a> )
Background:	Hyaluronoglucosaminidase 1 , HYAL-1, LUCA1, MGC45987, NAT6, hyaluronidase 1, plasma hyaluronidase, tumor suppressor LUCA-1
Gene ID:	3373
NCBI Accession:	<a href="#">NP_009296</a> , <a href="#">NP_695014</a> , <a href="#">NP_695015</a> , <a href="#">NP_695017</a>
Pathways:	<a href="#">Glycosaminoglycan Metabolic Process</a>

## Application Details

Application Notes:	Immunohistochemistry: Paraffin embedded Human Liver. Recommended concentration: 5 µg/mL. Peptide ELISA: antibody detection limit dilution 1:128000.
Comment:	<b>Immunofluorescence:</b> Strong expression of the protein seen in the cytoplasm of A431 and HeLa cells. Recommended concentration: 10µg/ml. <b>Flow Cytometry:</b> Flow cytometric analysis of HepG2 cells. Recommended concentration:
Restrictions:	For Research Use only

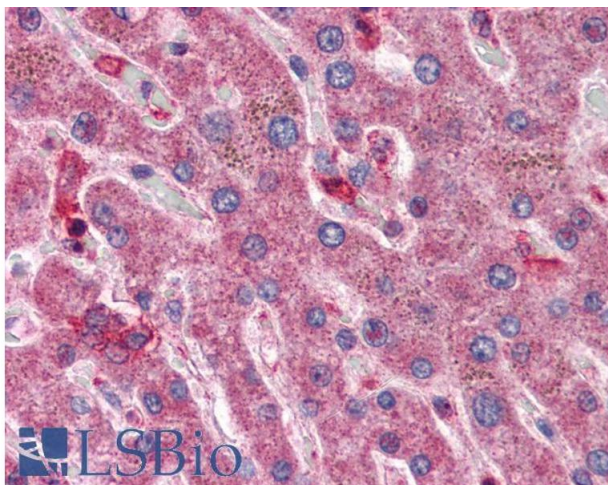
## Handling

Format:	Liquid
Concentration:	0.5 mg/mL
Buffer:	Supplied at 0.5 mg/mL in Tris saline, 0.02 % sodium azide, pH 7.3 with 0.5 % bovine serum albumin.
Preservative:	Sodium azide
Precaution of Use:	This product contains Sodium azide: a POISONOUS AND HAZARDOUS SUBSTANCE which should be handled by trained staff only.
Handling Advice:	Minimize freezing and thawing.
Storage:	-20 °C
Storage Comment:	Aliquot and store at -20°C, with minimal freeze/thawing. A working aliquot may be refrigerated at 4°C for a few weeks and still remain viable.



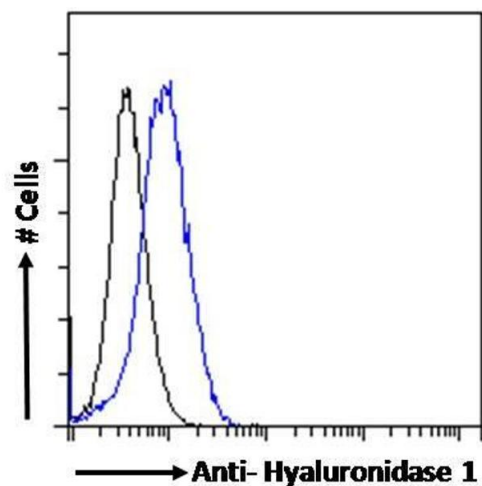
### Immunofluorescence

**Image 1.** ABIN334421 Immunofluorescence analysis of paraformaldehyde fixed HeLa cells, permeabilized with 0.15% Triton. Primary incubation 1hr (10ug/ml) followed by Alexa Fluor 488 secondary antibody (2ug/ml), showing cytoplasmic staining. The nuclear stain is DAPI (blue). Negative control: Unimmunized goat IgG (10ug/ml) followed by Alexa Fluor 488 secondary antibody (2ug/ml).



### Immunohistochemistry

**Image 2.** ABIN334421 (5µg/ml) staining of paraffin embedded Human Liver. Steamed antigen retrieval with citrate buffer pH 6, AP-staining.



### Flow Cytometry

**Image 3.** ABIN334421 Flow cytometric analysis of paraformaldehyde fixed HepG2 cells (blue line), permeabilized with 0.5% Triton. Primary incubation 1hr (10ug/ml) followed by Alexa Fluor 488 secondary antibody (1ug/ml). IgG control: Unimmunized goat IgG (black line) followed by Alexa Fluor 488 secondary antibody.

Please check the [product details page](#) for more images. Overall 4 images are available for ABIN334421.