

Datasheet for ABIN334425  
**anti-IDE antibody (Internal Region)**

## 3 Images

[Go to Product page](#)

## Overview

Quantity:	100 µg
Target:	IDE
Binding Specificity:	Internal Region
Reactivity:	Human
Host:	Goat
Clonality:	Polyclonal
Conjugate:	This IDE antibody is un-conjugated
Application:	Western Blotting (WB), ELISA, Immunohistochemistry (IHC)

## Product Details

Purpose:	Insulysin / Insulinase
Immunogen:	Peptide with sequence C-QQYNFDRDNTE, from the internal region of the protein sequence according to NP_004960.1, NP_001159418.1.
Sequence:	QQYNFDRDNT E
Isotype:	IgG
Specificity:	This antibody is expected to recognize all reported isoforms (NP_004960.2, NP_001159418.1, NP_001309722.1, NP_001309723.1, NP_001309724.1, NP_001309726.1). Reported variants represent identical protein: NP_001309725.1, NP_001309724.1
Cross-Reactivity:	Dog, Human
Purification:	Purified from goat serum by ammonium sulphate precipitation followed by antigen affinity

## Product Details

chromatography using the immunizing peptide.

Grade: Verified

## Target Details

Target: IDE

Alternative Name: IDE ([IDE Products](#))

Background: Insulinase, insulysin, insulin-degrading enzyme , FLJ35968, INSULYSIN

Gene ID: 3416

NCBI Accession: [NP\\_004960](#), [NP\\_001159418](#), [NP\\_001309722](#), [NP\\_001309723](#), [NP\\_001309724](#), [NP\\_001309726](#)

Pathways: [SARS-CoV-2 Protein Interactome](#)

## Application Details

Application Notes: Immunohistochemistry: Paraffin embedded Human Lung and Breast. Recommended concentration: 2.5 µg/mL.

Western Blot: Approx 110-120 kDa band observed in lysates of cell line K562 (calculated MW of 118 kDa according to NP\_004960.1). Recommended concentration: 0.1-0.3 µg/mL. Primary incubation was 1 hour.

Peptide ELISA: antibody detection limit dilution 1:32000.

Restrictions: For Research Use only

## Handling

Format: Liquid

Concentration: 0.5 mg/mL

Buffer: Supplied at 0.5 mg/mL in Tris saline, 0.02 % sodium azide, pH 7.3 with 0.5 % bovine serum albumin.

Preservative: Sodium azide

Precaution of Use: This product contains Sodium azide: a POISONOUS AND HAZARDOUS SUBSTANCE which should be handled by trained staff only.

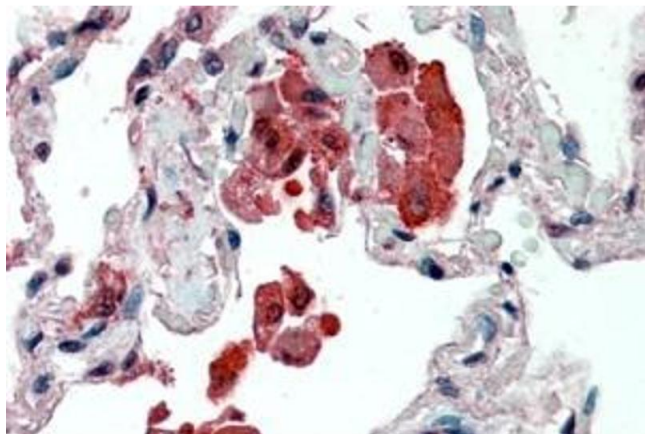
Handling Advice: Minimize freezing and thawing.

Storage: -20 °C

## Handling

**Storage Comment:** Aliquot and store at -20°C, with minimal freeze/thawing. A working aliquot may be refrigerated at 4°C for a few weeks and still remain viable.

## Images



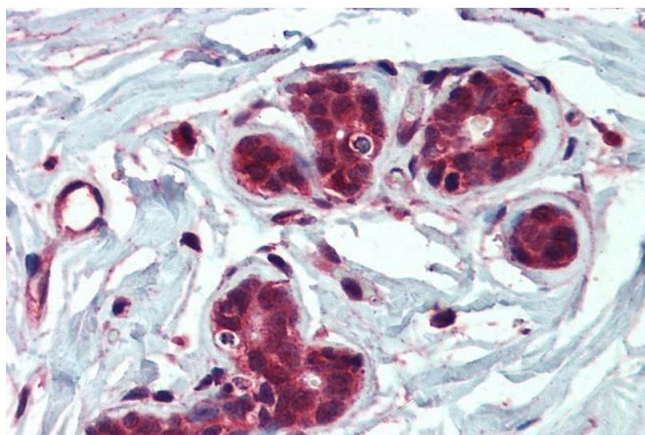
### Immunohistochemistry

**Image 1.** ABIN334425 (2.5µg/ml) staining of paraffin embedded Human Lung. Steamed antigen retrieval with citrate buffer pH 6, AP-staining.



### Western Blotting

**Image 2.** ABIN334425 (0.1µg/ml) staining of K562 cell lysate (35µg protein in RIPA buffer). Detected by chemiluminescence.



### Immunohistochemistry

**Image 3.** ABIN334425 (2.5µg/ml) staining of paraffin embedded Human Breast. Steamed antigen retrieval with citrate buffer pH 6, AP-staining.