

Datasheet for ABIN334426
anti-ITCH antibody (Internal Region)

5 Images

[Go to Product page](#)

Overview

Quantity:	100 µg
Target:	ITCH
Binding Specificity:	Internal Region
Reactivity:	Human
Host:	Goat
Clonality:	Polyclonal
Conjugate:	This ITCH antibody is un-conjugated
Application:	ELISA, Western Blotting (WB), Immunofluorescence (IF), Flow Cytometry (FACS)

Product Details

Purpose:	ITCH / AIF4
Immunogen:	Peptide with sequence C-EIKSHDLKPNGGN, from the internal region of the protein sequence according to NP_113671.3.
Sequence:	EIKSHDLKPN GGN
Isotype:	IgG
Cross-Reactivity:	Cow, Dog, Human, Mouse, Rat
Purification:	Purified from goat serum by ammonium sulphate precipitation followed by antigen affinity chromatography using the immunizing peptide.
Grade:	Verified

Target Details

Target:	ITCH
Alternative Name:	ITCH (ITCH Products)
Background:	ITCH, AIF4, itchy homolog E3 ubiquitin protein ligase (mouse) , AIP4, NAPP1, dJ468O1.1 , NFE2-associated polypeptide 1, atrophin-1 interacting protein 4, dJ468O1.1 (atrophin 1 interacting protein 4, AIP4), itchy homolog E3 ubiquitin protein ligase, ubiqui
Gene ID:	83737, 16396, 311567
NCBI Accession:	NP_113671 , NP_001244066 , NP_001244067
Pathways:	Activation of Innate immune Response , CXCR4-mediated Signaling Events

Application Details

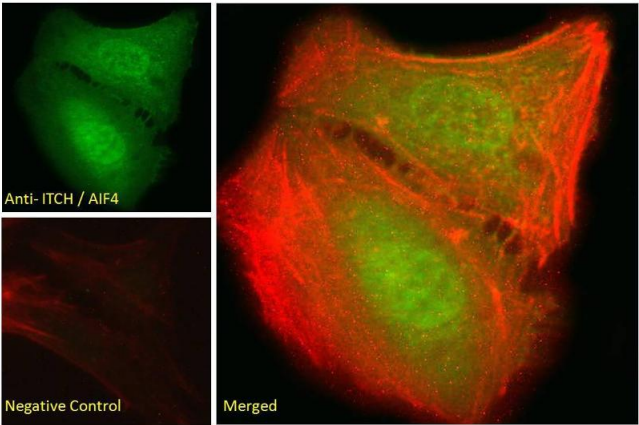
Application Notes:	Western Blot: Approx 90 kDa band observed in Human Brain (Frontal Cortex) lysates (calculated MW of 86.4 kDa according to NP_001244067.1) . Recommended concentration: 0.1-0.3 µg/mL. Primary incubation 1 hour at room temperature. Peptide ELISA: antibody detection limit dilution 1:16000.
Comment:	Immunofluorescence: Strong expression of the protein seen in the nuclei of A431 and U2OS cells. Recommended concentration: 10µg/ml. Flow Cytometry: Flow cytometric analysis of HeLa cells. Recommended concentration: 10
Restrictions:	For Research Use only

Handling

Format:	Liquid
Concentration:	0.5 mg/mL
Buffer:	Supplied at 0.5 mg/mL in Tris saline, 0.02 % sodium azide, pH 7.3 with 0.5 % bovine serum albumin.
Preservative:	Sodium azide
Precaution of Use:	This product contains Sodium azide: a POISONOUS AND HAZARDOUS SUBSTANCE which should be handled by trained staff only.
Handling Advice:	Minimize freezing and thawing.
Storage:	-20 °C
Storage Comment:	Aliquot and store at -20°C, with minimal freeze/thawing. A working aliquot may be refrigerated

at 4°C for a few weeks and still remain viable.

Images



Immunofluorescence

Image 1. ABIN334426 Immunofluorescence analysis of paraformaldehyde fixed U2OS cells, permeabilized with 0.15% Triton. Primary incubation 1hr (10ug/ml) followed by Alexa Fluor 488 secondary antibody (2ug/ml), showing nuclear staining. Actin filaments were stained with phalloidin (red) and the nuclear stain is DAPI (blue). Negative control: Unimmunized goat IgG (10ug/ml) followed by Alexa Fluor 488 secondary antibody (2ug/ml).



Image 2. ABIN334426 (0.03µg/ml) staining of Human Brain (Frontal Cortex) lysate (35µg protein in RIPA buffer). Primary incubation was 1 hour. Detected by chemiluminescence.



Western Blotting

Image 3. ABIN334426 (0.1µg/ml) staining of Human Brain (Frontal Cortex) lysate (35µg protein in RIPA buffer). Detected by chemiluminescence.

Please check the [product details page](#) for more images. Overall 5 images are available for ABIN334426.