

Datasheet for ABIN334431

**anti-MARK2 antibody (Internal Region)**[Go to Product page](#)**1** Image

## Overview

Quantity:	100 µg
Target:	MARK2
Binding Specificity:	Internal Region
Reactivity:	Human
Host:	Goat
Clonality:	Polyclonal
Conjugate:	This MARK2 antibody is un-conjugated
Application:	ELISA, Western Blotting (WB)

## Product Details

Purpose:	MARK2 / PAR-1
Immunogen:	Peptide with sequence C-QNGKDSTAPQR, from the internal region of the protein sequence according to NP_004945.4, NP_001156768.1, NP_001156769.1.
Sequence:	QNGKDSTAPQ R
Isotype:	IgG
Specificity:	This antibody is expected to recognise isoform c (NP_004945.4), isoform e (NP_001156768.1) and isoform f (NP_001156769.1).
Cross-Reactivity:	Cow, Human, Mouse, Rat
Purification:	Purified from goat serum by ammonium sulphate precipitation followed by antigen affinity chromatography using the immunizing peptide.

## Product Details

Grade: Verified

## Target Details

Target: MARK2

Alternative Name: MARK2 ([MARK2 Products](#))

Background: MARK2, PAR-1, MAP/microtubule affinity-regulating kinase 2, EMK1, MGC99619, ELKL motif kinase, ELKL motif kinase 1, protein-serine/threonine kinase, serine/threonine kinase

Gene ID: 2011, 13728, 60328

NCBI Accession: [NP\\_004945](#), [NP\\_001156768](#), [NP\\_001156769](#)

Pathways: [SARS-CoV-2 Protein Interactome](#), [The Global Phosphorylation Landscape of SARS-CoV-2 Infection](#)

## Application Details

Application Notes: Western Blot: Approx 70 kDa band observed in Human Brain (Cerebellum) lysates (calculated MW of 77.6 kDa according to NP\_004945.3). Recommended concentration: 0.3-1 µg/mL.  
Peptide ELISA: antibody detection limit dilution 1:16000.

Restrictions: For Research Use only

## Handling

Format: Liquid

Concentration: 0.5 mg/mL

Buffer: Supplied at 0.5 mg/mL in Tris saline, 0.02 % sodium azide, pH 7.3 with 0.5 % bovine serum albumin.

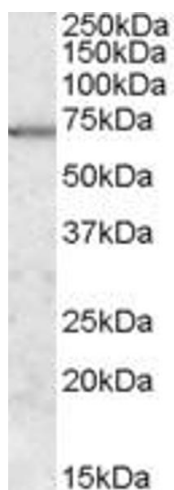
Preservative: Sodium azide

Precaution of Use: This product contains Sodium azide: a POISONOUS AND HAZARDOUS SUBSTANCE which should be handled by trained staff only.

Handling Advice: Minimize freezing and thawing.

Storage: -20 °C

Storage Comment: Aliquot and store at -20°C, with minimal freeze/thawing. A working aliquot may be refrigerated at 4°C for a few weeks and still remain viable.



**Image 1.** ABIN334431 (0.3µg/ml) staining of Human Brain (Cerebellum) lysate (35µg protein in RIPA buffer). Primary incubation was 1 hour. Detected by chemiluminescence.