

Datasheet for ABIN334432

anti-MBD2 antibody (Internal Region)



[Go to Product page](#)

4 Images

2 Publications

Overview

Quantity:	100 µg
Target:	MBD2
Binding Specificity:	Internal Region
Reactivity:	Human
Host:	Goat
Clonality:	Polyclonal
Conjugate:	This MBD2 antibody is un-conjugated
Application:	Western Blotting (WB), ELISA, Immunohistochemistry (IHC)

Product Details

Purpose:	MBD2 (isoform 1)
Immunogen:	Peptide with sequence C-RNDPLNQNKGPDLN, from the internal region of the protein sequence according to NP_003918.1.
Sequence:	RNDPLNQNKG KPDLN
Isotype:	IgG
Specificity:	This antibody is expected to resognize isoform 1 (NP_003918.1) only.
Cross-Reactivity:	Dog, Human, Mouse, Rat
Purification:	Purified from goat serum by ammonium sulphate precipitation followed by antigen affinity chromatography using the immunizing peptide.
Grade:	Verified

Target Details

Target:	MBD2
Alternative Name:	MBD2 (MBD2 Products)
Background:	MBD2, methyl-CpG binding domain protein 2 , DKFZp586O0821, DMTase, NY-CO-41
Gene ID:	8932, 17191
NCBI Accession:	NP_003918
Pathways:	Chromatin Binding

Application Details

Application Notes:	Immunohistochemistry: Paraffin embedded Human Colon, Adrenal Gland and Skin. Recommended concentration: 2.5 µg/mL. Western Blot: Approx 48-50 kDa band observed in lysates of cell line Jurkat (calculated MW of 43.3 kDa according to NP_003918.1). The observed molecular weight corresponds to earlier findings in literature with different antibodies (Tan et al, Mol Cell Bio Peptide ELISA: antibody detection limit dilution 1:64000.
Restrictions:	For Research Use only

Handling

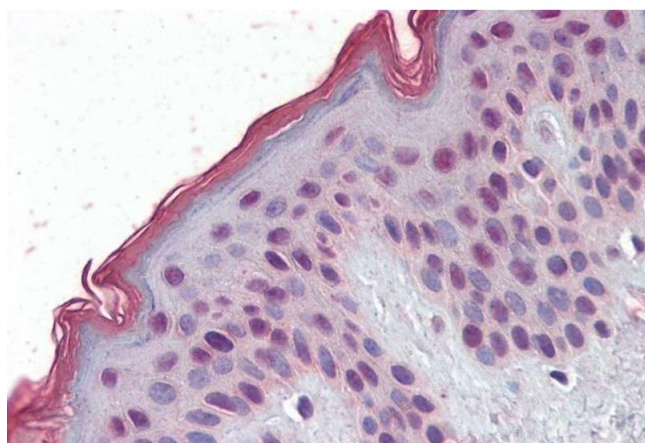
Format:	Liquid
Concentration:	0.5 mg/mL
Buffer:	Supplied at 0.5 mg/mL in Tris saline, 0.02 % sodium azide, pH 7.3 with 0.5 % bovine serum albumin.
Preservative:	Sodium azide
Precaution of Use:	This product contains Sodium azide: a POISONOUS AND HAZARDOUS SUBSTANCE which should be handled by trained staff only.
Handling Advice:	Minimize freezing and thawing.
Storage:	-20 °C
Storage Comment:	Aliquot and store at -20°C, with minimal freeze/thawing. A working aliquot may be refrigerated at 4°C for a few weeks and still remain viable.

Publications

Product cited in: Bartels, Spruijt, Brinkman, Jansen, Vermeulen, Stunnenberg: "A SILAC-based screen for Methyl-CpG binding proteins identifies RBP-J as a DNA methylation and sequence-specific binding protein." in: **PLoS ONE**, Vol. 6, Issue 10, pp. e25884, (2012) ([PubMed](#)).

Spruijt, Bartels, Brinkman, Tjeertes, Poser, Stunnenberg, Vermeulen: "CDK2AP1/DOC-1 is a bona fide subunit of the Mi-2/NuRD complex." in: **Molecular bioSystems**, Vol. 6, Issue 9, pp. 1700-6, (2010) ([PubMed](#)).

Images



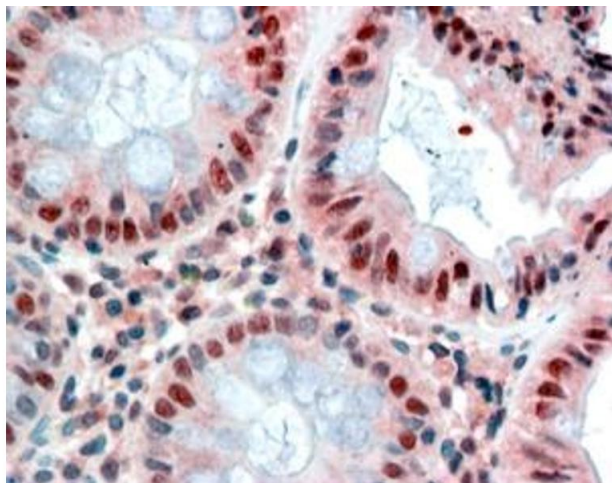
Immunohistochemistry

Image 1. (ABIN334432) (2.5 µg/mL) staining of paraffin embedded Human Skin. Steamed antigen retrieval with citrate buffer pH 6, AP-staining.



Western Blotting

Image 2. ABIN334432 (0.3 µg/ml) staining of Jurkat cell lysate (35 µg protein in RIPA buffer). Detected by chemiluminescence.



Immunohistochemistry

Image 3. ABIN334432 (2.5µg/ml) staining of paraffin embedded Human Colon. Steamed antigen retrieval with citrate buffer pH 6, AP-staining.

Please check the [product details page](#) for more images. Overall 4 images are available for ABIN334432.