

Datasheet for ABIN334436
anti-MGLL antibody (Internal Region)[Go to Product page](#)

9 Images

Overview

Quantity:	100 µg
Target:	MGLL
Binding Specificity:	Internal Region
Reactivity:	Human, Mouse
Host:	Goat
Clonality:	Polyclonal
Conjugate:	This MGLL antibody is un-conjugated
Application:	Western Blotting (WB), Immunohistochemistry (IHC), ELISA, Flow Cytometry (FACS), Immunofluorescence (IF)

Product Details

Purpose:	Monoglyceride Lipase
Immunogen:	Peptide with sequence C-QDLPHLVNADGQY, from the internal region (near N Terminus) of the protein sequence according to NP_009214.1, NP_001003794.1.
Sequence:	QDLPHLVNAD GQY
Isotype:	IgG
Specificity:	This antibody is expected to recognize both reported isoforms (NP_009214.1, NP_001003794.1).
Cross-Reactivity:	Cow, Dog, Human, Mouse, Rat
Purification:	Purified from goat serum by ammonium sulphate precipitation followed by antigen affinity

Product Details

chromatography using the immunizing peptide.

Grade: Verified

Target Details

Target: MGLL

Alternative Name: MGLL ([MGLL Products](#))

Background: Monoglyceride lipase, HU-K5, MGLL, MGL, lysophospholipase-like

Gene ID: 11343, 23945, 29254

NCBI Accession: [NP_009214](#), [NP_001003794](#)

Pathways: [Regulation of G-Protein Coupled Receptor Protein Signaling](#), [Lipid Metabolism](#)

Application Details

Application Notes: Immunohistochemistry: In paraffin embedded Human Liver, expression of MGLL is detected in hepatocytes. Recommended concentration: 5 µg/mL.

Western Blot: Approx 35 kDa band observed in Mouse Adipose lysates and in preliminary testing of Human, Cerebellum lysate and in lysate of cell line NIH3T3 (calculated MW of 33.3 kDa according to NP_001003794.1). Recommended concentration: 0.3-1 µg/mL. Pri
Peptide ELISA: antibody detection limit dilution 1:128000.

Comment: **Immunofluorescence:** Strong expression of the protein seen in the cytoplasm of U2OS and A431 cells. Recommended concentration: 10µg/ml.

Flow Cytometry: Flow cytometric analysis of A431 cells. Recommended concentration:

Restrictions: For Research Use only

Handling

Format: Liquid

Concentration: 0.5 mg/mL

Buffer: Supplied at 0.5 mg/mL in Tris saline, 0.02 % sodium azide, pH 7.3 with 0.5 % bovine serum albumin.

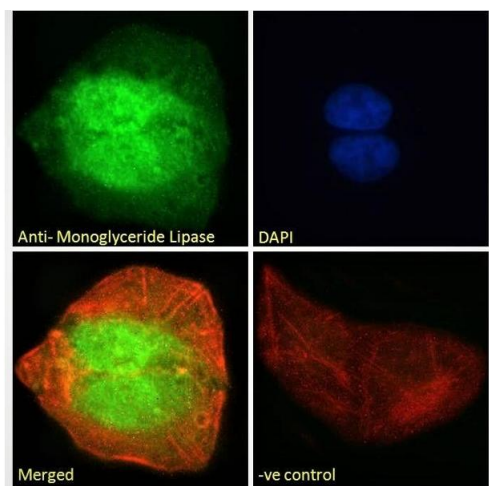
Preservative: Sodium azide

Precaution of Use: This product contains Sodium azide: a POISONOUS AND HAZARDOUS SUBSTANCE which

Handling

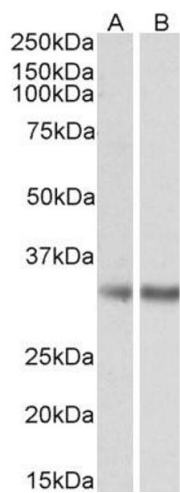
	should be handled by trained staff only.
Handling Advice:	Minimize freezing and thawing.
Storage:	-20 °C
Storage Comment:	Aliquot and store at -20°C, with minimal freeze/thawing. A working aliquot may be refrigerated at 4°C for a few weeks and still remain viable.

Images



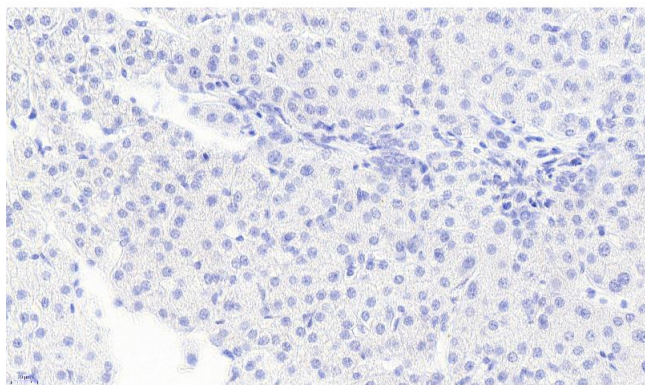
Immunofluorescence

Image 1. ABIN334436 Immunofluorescence analysis of paraformaldehyde fixed U2OS cells, permeabilized with 0.15 % Triton. Primary incubation 1hr (10 µg/mL) followed by Alexa Fluor 488 secondary antibody (2 µg/mL), showing nuclear and cytoplasmic staining. Actin filaments



Western Blotting

Image 2. ABIN334436 (0.5µg/ml) staining of Human Frontal Cortex (A) and Mouse Adipose (B) lysates (35µg protein in RIPA buffer). Detected by chemiluminescence.



Immunohistochemistry

Image 3. ABIN334436 Negative Control showing staining of paraffin embedded Human Liver, with no primary antibody.

Please check the [product details page](#) for more images. Overall 9 images are available for ABIN334436.