



Datasheet for ABIN334439
anti-MTHFD2L antibody (N-Term)



[Go to Product page](#)

1 Image

Overview

Quantity:	100 µg
Target:	MTHFD2L
Binding Specificity:	N-Term
Reactivity:	Human
Host:	Goat
Clonality:	Polyclonal
Conjugate:	This MTHFD2L antibody is un-conjugated
Application:	ELISA, Western Blotting (WB)

Product Details

Purpose:	MTHFD2L
Immunogen:	KHIQKEIQRGVES-C
Sequence:	KHIQKEIQRG VES
Isotype:	IgG
Cross-Reactivity:	Human
Purification:	Purified from goat serum by ammonium sulphate precipitation followed by antigen affinity chromatography using the immunizing peptide.
Grade:	Verified

Target Details

Target:	MTHFD2L
Alternative Name:	MTHFD2L (MTHFD2L Products)
Background:	MTHFD2L, methylenetetrahydrofolate dehydrogenase (NADP dependent) 2-like, FLJ13105, MGC45532, MGC72244
Gene ID:	441024
NCBI Accession:	NP_001004346

Application Details

Application Notes:	Western Blot: Approx 28 kDa band observed in Human Testis lysates (calculated MW of 31.3 kDa according to NP_001004346.2). Recommended concentration: 0.1-0.3 µg/mL. Peptide ELISA: antibody detection limit dilution 1:128000.
Restrictions:	For Research Use only

Handling

Format:	Liquid
Concentration:	0.5 mg/mL
Buffer:	Supplied at 0.5 mg/mL in Tris saline, 0.02 % sodium azide, pH 7.3 with 0.5 % bovine serum albumin.
Preservative:	Sodium azide
Precaution of Use:	This product contains Sodium azide: a POISONOUS AND HAZARDOUS SUBSTANCE which should be handled by trained staff only.
Handling Advice:	Minimize freezing and thawing.
Storage:	-20 °C
Storage Comment:	Aliquot and store at -20°C, with minimal freeze/thawing. A working aliquot may be refrigerated at 4°C for a few weeks and still remain viable.

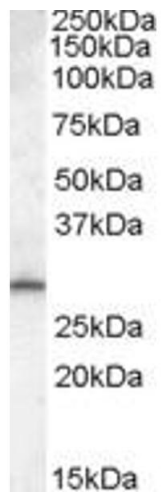


Image 1. ABIN334439 (0.1µg/ml) staining of Human Testis lysate (35µg protein in RIPA buffer). Primary incubation was 1 hour. Detected by chemiluminescence.