

Datasheet for ABIN334465

anti-PRPF31 antibody (Internal Region)**1** Image[Go to Product page](#)

Overview

Quantity:	100 µg
Target:	PRPF31
Binding Specificity:	Internal Region
Reactivity:	Human
Host:	Goat
Clonality:	Polyclonal
Conjugate:	This PRPF31 antibody is un-conjugated
Application:	Western Blotting (WB), ELISA, Immunofluorescence (IF), Flow Cytometry (FACS)

Product Details

Purpose:	PRPF31
Immunogen:	Peptide with sequence KELGNSLDKCKNNEN, from the internal region of the protein sequence according to NP_056444.3.
Sequence:	KELGNSLDKC KNNEN
Isotype:	IgG
Cross-Reactivity:	Cow, Dog, Human, Mouse, Pig, Rat
Purification:	Purified from goat serum by ammonium sulphate precipitation followed by antigen affinity chromatography using the immunizing peptide.
Grade:	Verified

Target Details

Target:	PRPF31
Alternative Name:	PRPF31 (PRPF31 Products)
Background:	PRPF31, PRP31 pre-mRNA processing factor 31 homolog (S. cerevisiae), DKFZp566J153, NY-BR-99, PRP31, RP11 , PRP31 pre-mRNA processing factor 31 homolog (yeast), pre-mRNA processing factor 31 homolog, pre-mRNA processing factor 31 homolog (yeast)
Gene ID:	26121, 68988
NCBI Accession:	NP_056444
Pathways:	Ribonucleoprotein Complex Subunit Organization

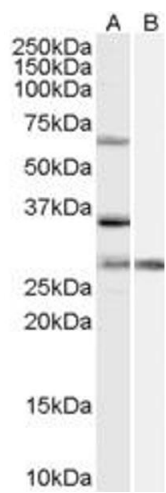
Application Details

Application Notes:	Western Blot: Approx 60 kDa band observed in nuclear lysates of cell lines A431, HeLa, HEK293 and NIH3T3 (calculated MW of 55.4 kDa according to Human NP_056444.3 and Mouse NP_081604.3). Recommended concentration: 1-3 µg/mL. Primary incubation 1 hour at room temperature. Peptide ELISA: antibody detection limit dilution 1:128000.
Comment:	Immunofluorescence: Strong expression of the protein seen in the nuclei and cytoplasm of HEK293 and HeLa cells. Recommended concentration: 10µg/ml. Flow Cytometry: Flow cytometric analysis of HEK293 cells. Recommended
Restrictions:	For Research Use only

Handling

Format:	Liquid
Concentration:	0.5 mg/mL
Buffer:	Supplied at 0.5 mg/mL in Tris saline, 0.02 % sodium azide, pH 7.3 with 0.5 % bovine serum albumin.
Preservative:	Sodium azide
Precaution of Use:	This product contains Sodium azide: a POISONOUS AND HAZARDOUS SUBSTANCE which should be handled by trained staff only.
Handling Advice:	Minimize freezing and thawing.
Storage:	-20 °C
Storage Comment:	Aliquot and store at -20°C, with minimal freeze/thawing. A working aliquot may be refrigerated

at 4°C for a few weeks and still remain viable.



Western Blotting

Image 1. ABIN334465 (1µg/ml) staining of HeLa cell lysate (35µg protein in RIPA buffer) with (B) and without (A) blocking with the immunising peptide. Detected by chemiluminescence.