

Datasheet for ABIN334467
anti-PSME2 antibody (C-Term)[Go to Product page](#)

2 Images

Overview

Quantity:	100 µg
Target:	PSME2
Binding Specificity:	C-Term
Reactivity:	Human
Host:	Goat
Clonality:	Polyclonal
Conjugate:	This PSME2 antibody is un-conjugated
Application:	Western Blotting (WB), ELISA, Immunohistochemistry (IHC)

Product Details

Purpose:	PSME2
Immunogen:	Peptide with sequence C-NLEKIVNPKGEEKP, from the C Terminus of the protein sequence according to NP_002809.2.
Sequence:	NLEKIVNPKG EEKP
Isotype:	IgG
Cross-Reactivity:	Dog, Human, Mouse, Rat
Purification:	Purified from goat serum by ammonium sulphate precipitation followed by antigen affinity chromatography using the immunizing peptide.
Grade:	Verified

Target Details

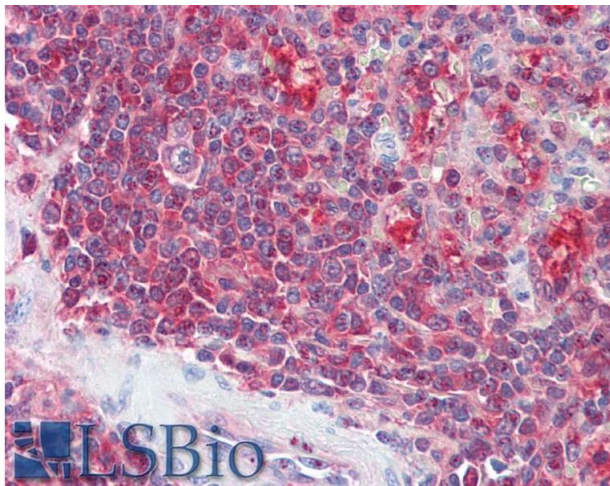
Target:	PSME2
Alternative Name:	PSME2 (PSME2 Products)
Background:	PSME2, proteasome (prosome, macropain) activator subunit 2 (PA28 beta), PA28B, PA28beta, REGbeta , 11S regulator complex beta subunit, MCP activator, 31-kD subunit, activator of multicatalytic protease subunit 2, cell migration-inducing protein 22, protea
Gene ID:	5721, 19188, 29614
NCBI Accession:	NP_002809
Pathways:	Mitotic G1-G1/S Phases , DNA Replication , Positive Regulation of Endopeptidase Activity , Synthesis of DNA

Application Details

Application Notes:	Immunohistochemistry: Paraffin embedded Human Spleen. Recommended concentration: 5 µg/mL. Western Blot: Approx 27 kDa band observed in Human Spleen lysates (calculated MW of 27.4 kDa according to NP_002809.2). Recommended concentration: 0.5-1 µg/mL. Peptide ELISA: antibody detection limit dilution 1:32000.
Restrictions:	For Research Use only

Handling

Format:	Liquid
Concentration:	0.5 mg/mL
Buffer:	Supplied at 0.5 mg/mL in Tris saline, 0.02 % sodium azide, pH 7.3 with 0.5 % bovine serum albumin.
Preservative:	Sodium azide
Precaution of Use:	This product contains Sodium azide: a POISONOUS AND HAZARDOUS SUBSTANCE which should be handled by trained staff only.
Handling Advice:	Minimize freezing and thawing.
Storage:	-20 °C
Storage Comment:	Aliquot and store at -20°C, with minimal freeze/thawing. A working aliquot may be refrigerated at 4°C for a few weeks and still remain viable.



Immunohistochemistry

Image 1. ABIN334467 (5µg/ml) staining of paraffin embedded Human Spleen. Steamed antigen retrieval with citrate buffer pH 6, AP-staining.

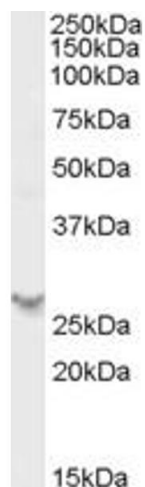


Image 2. ABIN334467 (0.5µg/ml) staining of Human Spleen lysate (35µg protein in RIPA buffer). Primary incubation was 1 hour. Detected by chemiluminescence.