

Datasheet for ABIN334476

anti-RASSF8 antibody (Internal Region)[Go to Product page](#)**1** Image

Overview

Quantity:	100 µg
Target:	RASSF8
Binding Specificity:	Internal Region
Reactivity:	Human
Host:	Goat
Clonality:	Polyclonal
Conjugate:	This RASSF8 antibody is un-conjugated
Application:	Western Blotting (WB), ELISA

Product Details

Purpose:	RASSF8
Immunogen:	Peptide with sequence C-RDTERHLAPHEN, from the internal region of the protein sequence according to NP_009142.2.
Sequence:	RDTERHLAPH EN
Isotype:	IgG
Cross-Reactivity:	Cow, Human, Mouse
Purification:	Purified from goat serum by ammonium sulphate precipitation followed by antigen affinity chromatography using the immunizing peptide.
Grade:	Verified

Target Details

Target:	RASSF8
Alternative Name:	RASSF8 (RASSF8 Products)
Background:	RASSF8, Ras association (RalGDS/AF-6) domain family 8, C12orf2, HoJ-1, carcinoma associated HOJ-1
Gene ID:	11228, 71323
NCBI Accession:	NP_009142
Pathways:	Chromatin Binding

Application Details

Application Notes:	Western Blot: Approx 40-45 kDa band observed in Human Testis lysates (calculated MW of 45.4 kDa according to NP_009142.2). Recommended concentration: 0.3-1 µg/mL. Peptide ELISA: antibody detection limit dilution 1:128000.
Restrictions:	For Research Use only

Handling

Format:	Liquid
Concentration:	0.5 mg/mL
Buffer:	Supplied at 0.5 mg/mL in Tris saline, 0.02 % sodium azide, pH 7.3 with 0.5 % bovine serum albumin.
Preservative:	Sodium azide
Precaution of Use:	This product contains Sodium azide: a POISONOUS AND HAZARDOUS SUBSTANCE which should be handled by trained staff only.
Handling Advice:	Minimize freezing and thawing.
Storage:	-20 °C
Storage Comment:	Aliquot and store at -20°C, with minimal freeze/thawing. A working aliquot may be refrigerated at 4°C for a few weeks and still remain viable.

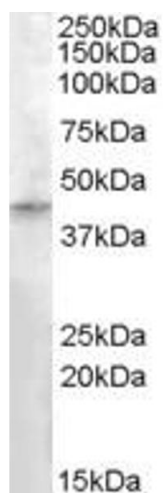


Image 1. ABIN334476 (0.3µg/ml) staining of Human Testis lysate (35µg protein in RIPA buffer). Primary incubation was 1 hour. Detected by chemiluminescence.