

Datasheet for ABIN334478  
**anti-RPL8 antibody (Internal Region)**

## 3 Images

[Go to Product page](#)

## Overview

Quantity:	100 µg
Target:	RPL8
Binding Specificity:	Internal Region
Reactivity:	Human
Host:	Goat
Clonality:	Polyclonal
Conjugate:	This RPL8 antibody is un-conjugated
Application:	Western Blotting (WB), ELISA, Immunohistochemistry (IHC)

## Product Details

Purpose:	ribosomal protein L8
Immunogen:	Peptide with sequence KAGRAYHKYKAKRNC, from the internal region of the protein sequence according to NP_000964.1, NP_150644.1.
Sequence:	KAGRAYHKYK AKRNC
Isotype:	IgG
Specificity:	The reported variants represent identical protein (NP_000964.1 and NP_150644.1).
Cross-Reactivity:	Dog, Human, Mouse, Rat
Purification:	Purified from goat serum by ammonium sulphate precipitation followed by antigen affinity chromatography using the immunizing peptide.
Grade:	Verified

## Target Details

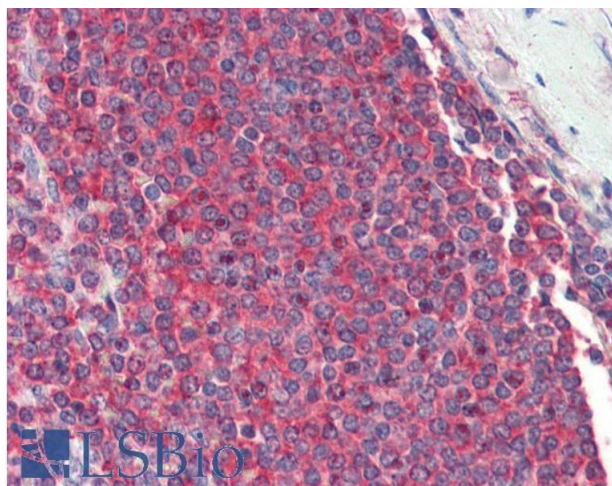
Target:	RPL8
Alternative Name:	RPL8 ( <a href="#">RPL8 Products</a> )
Background:	Ribosomal protein L8, 60S ribosomal protein L8
Gene ID:	6132, 26961, 26962
NCBI Accession:	<a href="#">NP_000964</a>
Pathways:	<a href="#">Regulation of Cell Size</a>

## Application Details

Application Notes:	Immunohistochemistry: Paraffin embedded Human Cerebral Cortex and Spleen. Recommended concentration: 2.5 µg/mL. Western Blot: Approx 28-30 kDa band observed in lysates of cell line HepG2 (calculated MW of 28.0 kDa according to NP_000964.1 and NP_150644.1). Recommended concentration: 0.01-0.03 µg/mL. Primary incubation was 1 hour. Peptide ELISA: antibody detection limit dilution 1:128000.
Restrictions:	For Research Use only

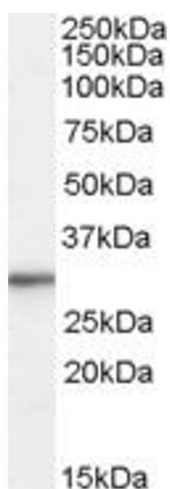
## Handling

Format:	Liquid
Concentration:	0.5 mg/mL
Buffer:	Supplied at 0.5 mg/mL in Tris saline, 0.02 % sodium azide, pH 7.3 with 0.5 % bovine serum albumin.
Preservative:	Sodium azide
Precaution of Use:	This product contains Sodium azide: a POISONOUS AND HAZARDOUS SUBSTANCE which should be handled by trained staff only.
Handling Advice:	Minimize freezing and thawing.
Storage:	-20 °C
Storage Comment:	Aliquot and store at -20°C, with minimal freeze/thawing. A working aliquot may be refrigerated at 4°C for a few weeks and still remain viable.



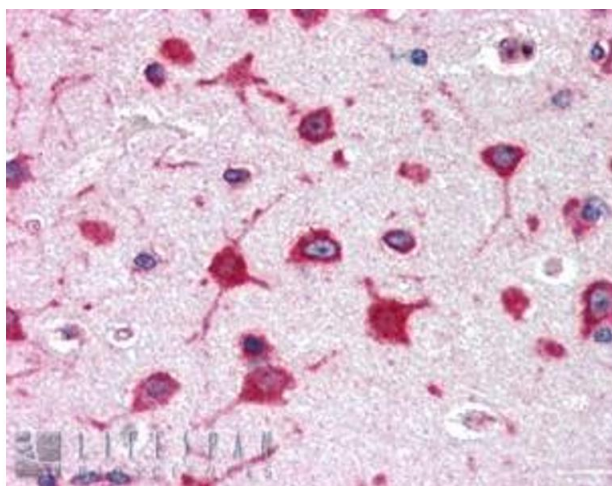
#### Immunohistochemistry

**Image 1.** ABIN334478 (2.5µg/ml) staining of paraffin embedded Human Spleen. Steamed antigen retrieval with citrate buffer pH 6, AP-staining.



#### Western Blotting

**Image 2.** ABIN334478 (0.01µg/ml) staining of HepG2 cell lysate (35µg protein in RIPA buffer). Detected by chemiluminescence.



#### Immunohistochemistry

**Image 3.** ABIN334478 (2.5µg/ml) staining of paraffin embedded Human Cerebral Cortex. Steamed antigen retrieval with citrate buffer pH 6, AP-staining.