

Datasheet for ABIN334479

anti-DROSHA antibody (Internal Region)**2** Images[Go to Product page](#)

Overview

Quantity:	100 µg
Target:	DROSHA
Binding Specificity:	Internal Region
Reactivity:	Human
Host:	Goat
Clonality:	Polyclonal
Conjugate:	This DROSHA antibody is un-conjugated
Application:	Western Blotting (WB), ELISA

Product Details

Purpose:	RNASEN / Drosha
Immunogen:	C-KQTDKQKLAQRE
Sequence:	KQTDKQKLAQ RE
Isotype:	IgG
Specificity:	This antibody also cross-reacts with human Ribonuclease III (GeneID 29102, NP_037367.2).
Cross-Reactivity:	Dog, Human, Mouse, Rat
Purification:	Purified from goat serum by ammonium sulphate precipitation followed by antigen affinity chromatography using the immunizing peptide.
Grade:	Verified

Target Details

Target:	DROSHA
Alternative Name:	RNASEN (DROSHA Products)
Background:	Rnasen, Drosha, ribonuclease III, nuclear , 1110013A17Rik, AI874853, Etohi2, MGC115770, Rn3 , ethanol induced 2, ribonuclease III
Gene ID:	29102, 14000, 310159
NCBI Accession:	NP_081075
Pathways:	Regulatory RNA Pathways

Application Details

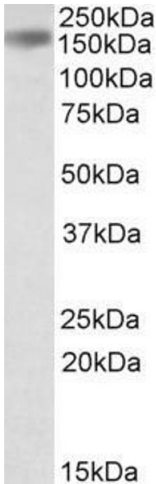
Application Notes:	Western Blot: Approx 150-160 kDa band observed in Human Liver lysates (calculated MW of 151 kDa according to NP_081075.2). Recommended concentration: 0.3-1 µg/mL. Primary incubation was 1 hour. Preliminary testing was unsuccessful on Mouse and Rat Liver for Peptide ELISA: antibody detection limit dilution 1:16000.
Restrictions:	For Research Use only

Handling

Format:	Liquid
Concentration:	0.5 mg/mL
Buffer:	Supplied at 0.5 mg/mL in Tris saline, 0.02 % sodium azide, pH 7.3 with 0.5 % bovine serum albumin.
Preservative:	Sodium azide
Precaution of Use:	This product contains Sodium azide: a POISONOUS AND HAZARDOUS SUBSTANCE which should be handled by trained staff only.
Handling Advice:	Minimize freezing and thawing.
Storage:	-20 °C
Storage Comment:	Aliquot and store at -20°C, with minimal freeze/thawing. A working aliquot may be refrigerated at 4°C for a few weeks and still remain viable.



Image 1. ABIN334479 (0.5µg/ml) staining of Human Liver lysate (35µg protein in RIPA buffer). Primary incubation was 1 hour. Detected by chemiluminescence.



Western Blotting

Image 2. ABIN334479 (0.3µg/ml) staining of Human Liver lysate (35µg protein in RIPA buffer). Primary incubation was 1 hour. Detected by chemiluminescence.