

Datasheet for ABIN334480
anti-RNF213 antibody (C-Term)[Go to Product page](#)

1 Image

Overview

Quantity:	100 µg
Target:	RNF213
Binding Specificity:	C-Term
Reactivity:	Human
Host:	Goat
Clonality:	Polyclonal
Conjugate:	This RNF213 antibody is un-conjugated
Application:	ELISA, Immunohistochemistry (IHC)

Product Details

Purpose:	RNF213 / C17orf27 (C Terminus)
Immunogen:	Peptide with sequence C-KTAAVLKWNRE, from the C Terminus of the protein sequence according to NP_065965.4.
Sequence:	KTAAVLKWNRE
Isotype:	IgG
Cross-Reactivity:	Human
Purification:	Purified from goat serum by ammonium sulphate precipitation followed by antigen affinity chromatography using the immunizing peptide.
Grade:	Verified

Target Details

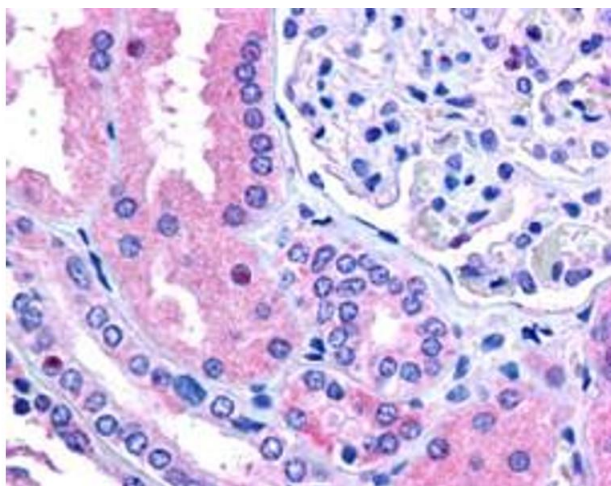
Target:	RNF213
Alternative Name:	RNF213 (RNF213 Products)
Background:	RNF213, C17orf27, ring finger protein 213, chromosome 17 open reading frame 27, KIAA1554
Gene ID:	57674
NCBI Accession:	NP_065965

Application Details

Application Notes:	<p>Immunohistochemistry: In paraffin embedded human kidney shows rare staining of nucleoli across the kidney . Recommended concentration, 2.5 µg/mL.</p> <p>Western Blot: Not yet tested - our routinely used western blotting protocol does not allow detection of proteins as large as the calculated size of 374 kDa according to NP_065965.3. Therefore we cannot recommend an optimal concentration and the product is</p> <p>Peptide ELISA: antibody detection limit dilution 1:4000.</p>
Restrictions:	For Research Use only

Handling

Format:	Liquid
Concentration:	0.5 mg/mL
Buffer:	Supplied at 0.5 mg/mL in Tris saline, 0.02 % sodium azide, pH 7.3 with 0.5 % bovine serum albumin.
Preservative:	Sodium azide
Precaution of Use:	This product contains Sodium azide: a POISONOUS AND HAZARDOUS SUBSTANCE which should be handled by trained staff only.
Handling Advice:	Minimize freezing and thawing.
Storage:	-20 °C
Storage Comment:	Aliquot and store at -20°C, with minimal freeze/thawing. A working aliquot may be refrigerated at 4°C for a few weeks and still remain viable.



Immunohistochemistry

Image 1. ABIN334480 (2.5µg/ml) staining of paraffin embedded human kidney. Steamed antigen retrieval with citrate buffer pH 6, AP-staining