

Datasheet for ABIN334485

anti-s100a4 antibody (C-Term)



[Go to Product page](#)

3 Images

1 Publication

Overview

Quantity:	100 µg
Target:	s100a4 (S100A4)
Binding Specificity:	C-Term
Reactivity:	Human
Host:	Goat
Clonality:	Polyclonal
Conjugate:	This s100a4 antibody is un-conjugated
Application:	Western Blotting (WB), Immunohistochemistry (IHC), ELISA

Product Details

Purpose:	S100A4 / CAPL
Immunogen:	Peptide with sequence CNEFFEGFPDKQP, from the C Terminus of the protein sequence according to NP_002952.1, NP_062427.1.
Sequence:	CNEFFEGFPD KQP
Isotype:	IgG
Specificity:	Both variants (NP_002952.1, NP_062427.1) represent identical protein.
Cross-Reactivity:	Dog, Human, Mouse, Rat
Purification:	Purified from goat serum by ammonium sulphate precipitation followed by antigen affinity chromatography using the immunizing peptide.
Grade:	Verified

Target Details

Target:	s100a4 (S100A4)
Alternative Name:	S100A4 (S100A4 Products)
Background:	S100A4, CAPL, S100 calcium binding protein A4, 18A2, 42A, MTS1, P9KA, PEL98, S100 calcium binding protein A4 (calcium protein, calvasculin, metastasin, murine placental homolog), S100 calcium-binding protein A4, S100 calcium-binding protein A4 (calcium pr
Gene ID:	6275, 20198, 24615
NCBI Accession:	NP_002952 , NP_062427
Pathways:	S100 Proteins

Application Details

Application Notes:	Immunohistochemistry: In paraffin embedded Human Small Intestine shows staining of lymphatic cells in the lamina propria. Recommended concentration: 1-2 µg/mL. Western Blot: Approx 13 kDa band observed in Human Peripheral blood mononuclear cells lysates (calculated MW of 11.7 kDa according to NP_002952.1). Recommended concentration: 0.05-0.2 µg/mL. Primary incubation was 1 hour. Peptide ELISA: antibody detection limit dilution 1:128000.
Restrictions:	For Research Use only

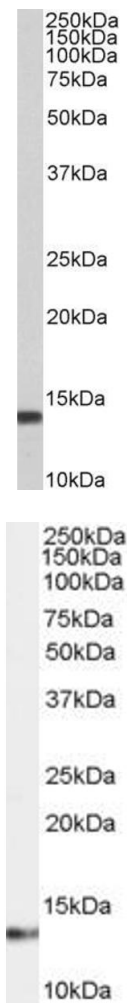
Handling

Format:	Liquid
Concentration:	0.5 mg/mL
Buffer:	Supplied at 0.5 mg/mL in Tris saline, 0.02 % sodium azide, pH 7.3 with 0.5 % bovine serum albumin.
Preservative:	Sodium azide
Precaution of Use:	This product contains Sodium azide: a POISONOUS AND HAZARDOUS SUBSTANCE which should be handled by trained staff only.
Handling Advice:	Minimize freezing and thawing.
Storage:	-20 °C
Storage Comment:	Aliquot and store at -20°C, with minimal freeze/thawing. A working aliquot may be refrigerated at 4°C for a few weeks and still remain viable.

Publications

Product cited in: Rasanen, Sriswasdi, Valiga, Tang, Zhang, Perego, Somasundaram, Li, Speicher, Klein-Szanto, Basu, Rustgi, Speicher, Herlyn: "Comparative secretome analysis of epithelial and mesenchymal subpopulations of head and neck squamous cell carcinoma identifies S100A4 as a potential therapeutic target." in: **Molecular & cellular proteomics : MCP**, Vol. 12, Issue 12, pp. 3778-92, (2013) ([PubMed](#)).

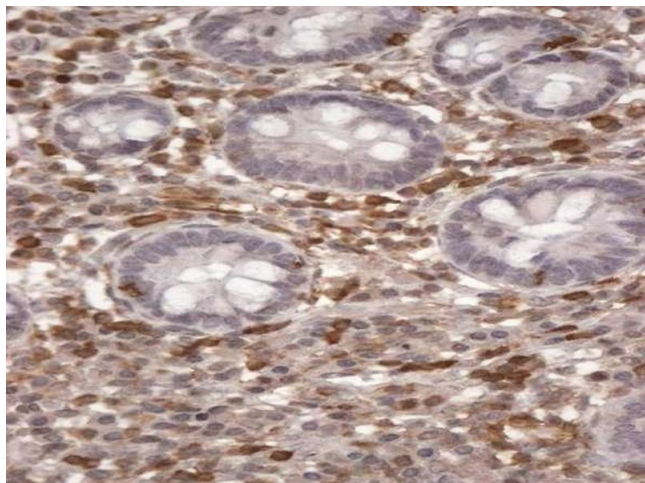
Images



Western Blotting

Image 1. ABIN334485 (0.05µg/ml) staining of Peripheral blood mononuclear cells lysate (35µg protein in RIPA buffer). Primary incubation was 1 hour. Detected by chemiluminescence.

Image 2. ABIN334485 (0.03µg/ml) staining of Human Placenta lysate (35µg protein in RIPA buffer). Primary incubation was 1 hour. Detected by chemiluminescence.



Immunohistochemistry

Image 3. ABIN334485 (2µg/ml) staining of paraffin embedded Human Small Intestine. Steamed antigen retrieval with citrate buffer pH 6, HRP-staining.