

Datasheet for ABIN334487

anti-SEMA3E antibody (Internal Region)[Go to Product page](#)**1** Image

Overview

Quantity:	100 µg
Target:	SEMA3E
Binding Specificity:	Internal Region
Reactivity:	Human
Host:	Goat
Clonality:	Polyclonal
Conjugate:	This SEMA3E antibody is un-conjugated
Application:	Immunohistochemistry (IHC), ELISA

Product Details

Purpose:	Semaphorin 3E (internal)
Immunogen:	Peptide with sequence C-NGGRYGTTKDYDD, from the internal region of the protein sequence according to NP_036563.1, NP_001171600.1.
Sequence:	NGGRYGTTKD YPDD
Isotype:	IgG
Specificity:	This antibody is expected to recognise both reported isoforms (NP_036563.1, NP_001171600.1).
Cross-Reactivity:	Dog, Human, Mouse, Pig, Rat
Purification:	Purified from goat serum by ammonium sulphate precipitation followed by antigen affinity chromatography using the immunizing peptide.

Product Details

Grade: Verified

Target Details

Target: SEMA3E

Alternative Name: SEMA3E ([SEMA3E Products](#))

Background: SEMA3E, sema domain, immunoglobulin domain (Ig), short basic domain, secreted, (semaphorin) 3E, KIAA0331, M-SEMAH, M-SemaK, M-sema H, SEMAH, coll-5 , sema domain, immunoglobulin domain (Ig), short basic domain, secreted, 3E, semaphorin 3E

Gene ID: 9723, 20349

NCBI Accession: [NP_036563](#), [NP_001171600](#)

Application Details

Application Notes: Immunohistochemistry: In paraffin embedded Human Prostate shows membranous staining of secretory cells in the gland. Recommended concentration, 4-6 µg/mL.

Western Blot: Preliminary experiments gave an approx 35 kDa band in Human Prostate lysates after 0.03 µg/mL antibody staining. Please note that currently we cannot find an explanation in the literature for the band we observe given the calculated size of 8

Peptide ELISA: antibody detection limit dilution 1:128000.

Restrictions: For Research Use only

Handling

Format: Liquid

Concentration: 0.5 mg/mL

Buffer: Supplied at 0.5 mg/mL in Tris saline, 0.02 % sodium azide, pH 7.3 with 0.5 % bovine serum albumin.

Preservative: Sodium azide

Precaution of Use: This product contains Sodium azide: a POISONOUS AND HAZARDOUS SUBSTANCE which should be handled by trained staff only.

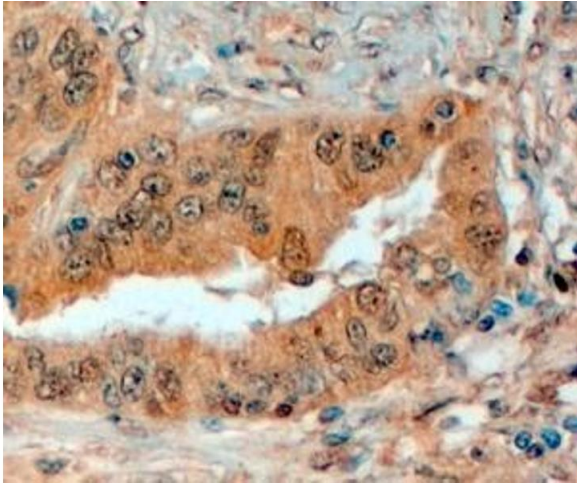
Handling Advice: Minimize freezing and thawing.

Storage: -20 °C

Handling

Storage Comment: Aliquot and store at -20°C, with minimal freeze/thawing. A working aliquot may be refrigerated at 4°C for a few weeks and still remain viable.

Images



Immunohistochemistry

Image 1. ABIN334487 (4µg/ml) staining of paraffin embedded Human Prostate. Steamed antigen retrieval with citrate buffer pH 6, HRP-staining.