

Datasheet for ABIN334489

anti-SH2D4A antibody (Internal Region)[Go to Product page](#)**1** Image

Overview

Quantity:	100 µg
Target:	SH2D4A
Binding Specificity:	Internal Region
Reactivity:	Human
Host:	Goat
Clonality:	Polyclonal
Conjugate:	This SH2D4A antibody is un-conjugated
Application:	Western Blotting (WB), ELISA

Product Details

Purpose:	SH2D4A
Immunogen:	Peptide with sequence C-HQKKESMKKKQDE, from the internal region of the protein sequence according to NP_071354.2.
Sequence:	HQKKESMKKK QDE
Isotype:	IgG
Cross-Reactivity:	Dog, Human
Purification:	Purified from goat serum by ammonium sulphate precipitation followed by antigen affinity chromatography using the immunizing peptide.
Grade:	Verified

Target Details

Target:	SH2D4A
Alternative Name:	SH2D4A (SH2D4A Products)
Background:	SH2D4A, SH2 domain containing 4A, FLJ20967, SH2A
Gene ID:	63898
NCBI Accession:	NP_071354

Application Details

Application Notes:	Western Blot: Approx. 55 kDa band observed in Human Kidney lysates (calculated MW of 52.7 kDa according to NP_071354.2). Recommended concentration: 0.1-0.3 µg/mL. Peptide ELISA: antibody detection limit dilution 1:1000.
Restrictions:	For Research Use only

Handling

Format:	Liquid
Concentration:	0.5 mg/mL
Buffer:	Supplied at 0.5 mg/mL in Tris saline, 0.02 % sodium azide, pH 7.3 with 0.5 % bovine serum albumin.
Preservative:	Sodium azide
Precaution of Use:	This product contains Sodium azide: a POISONOUS AND HAZARDOUS SUBSTANCE which should be handled by trained staff only.
Handling Advice:	Minimize freezing and thawing.
Storage:	-20 °C
Storage Comment:	Aliquot and store at -20°C, with minimal freeze/thawing. A working aliquot may be refrigerated at 4°C for a few weeks and still remain viable.

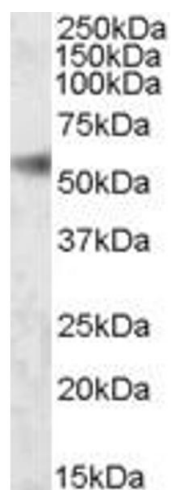


Image 1. ABIN334489 (0.1µg/ml) staining of Human Kidney lysate (35µg protein in RIPA buffer). Primary incubation was 1 hour. Detected by chemiluminescence.