

Datasheet for ABIN334493

anti-SMEK1 antibody (Internal Region)**2** Images[Go to Product page](#)

Overview

Quantity:	100 µg
Target:	SMEK1
Binding Specificity:	Internal Region
Reactivity:	Human
Host:	Goat
Clonality:	Polyclonal
Conjugate:	This SMEK1 antibody is un-conjugated
Application:	Western Blotting (WB), ELISA

Product Details

Purpose:	SMEK1 / KIAA2010
Immunogen:	Peptide with sequence C-EQQRERQDNPKLD, from the internal region of the protein sequence according to NP_115949.3.
Sequence:	EQQRERQDNP KLD
Isotype:	IgG
Cross-Reactivity:	Dog, Human, Mouse, Rat
Purification:	Purified from goat serum by ammonium sulphate precipitation followed by antigen affinity chromatography using the immunizing peptide.
Grade:	Verified

Target Details

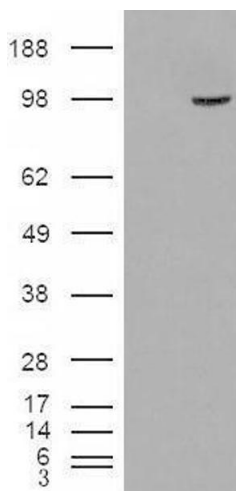
Target:	SMEK1
Alternative Name:	SMEK1 (SMEK1 Products)
Background:	SMEK homolog 1, suppressor of mek1 (Dictyostelium) , KIAA2010 , FLFL1 , MSTP033 , smk-1 , smk1, SMEK homolog 1, suppressor of mek1
Gene ID:	55671, 68734, 314388
NCBI Accession:	NP_115949
Pathways:	Regulation of Carbohydrate Metabolic Process

Application Details

Application Notes:	Western Blot: Approx 110 kDa band observed in Human Pancreas lysates (calculated MW of 93.9 kDa according to NP_115949.3). In transfected HEK293 transiently expressing SMEK1 a band of approx. 95 kDa is observed. This band is not observed in the non-transfec Peptide ELISA: antibody detection limit dilution 1:16000.
Restrictions:	For Research Use only

Handling

Format:	Liquid
Concentration:	0.5 mg/mL
Buffer:	Supplied at 0.5 mg/mL in Tris saline, 0.02 % sodium azide, pH 7.3 with 0.5 % bovine serum albumin.
Preservative:	Sodium azide
Precaution of Use:	This product contains Sodium azide: a POISONOUS AND HAZARDOUS SUBSTANCE which should be handled by trained staff only.
Handling Advice:	Minimize freezing and thawing.
Storage:	-20 °C
Storage Comment:	Aliquot and store at -20°C, with minimal freeze/thawing. A working aliquot may be refrigerated at 4°C for a few weeks and still remain viable.



Western Blotting

Image 1. HEK293 overexpressing SMEK1 (ABIN5408171) and probed with ABIN334493 (mock transfection in first lane).



Image 2. ABIN334493 (0.3µg/ml) staining of Human Pancreas lysate (35µg protein in RIPA buffer). Primary incubation was 1 hour. Detected by chemiluminescence.