



[Go to Product page](#)

Datasheet for ABIN334503

anti-TARDBP antibody (Internal Region)

3 Images

Overview

Quantity:	100 µg
Target:	TARDBP
Binding Specificity:	Internal Region
Reactivity:	Human
Host:	Goat
Clonality:	Polyclonal
Conjugate:	This TARDBP antibody is un-conjugated
Application:	Western Blotting (WB), Immunohistochemistry (IHC), ELISA

Product Details

Purpose:	TDP-43
Immunogen:	Peptide with sequence C-HISNAEPKHNSNRQ, from the internal region of the protein sequence according to NP_031401.1.
Sequence:	HISNAEPKHNSNRQ
Isotype:	IgG
Cross-Reactivity:	Cow, Dog, Human, Mouse, Pig, Rat
Purification:	Purified from goat serum by ammonium sulphate precipitation followed by antigen affinity chromatography using the immunizing peptide.
Grade:	Verified

Target Details

Target:	TARDBP
Alternative Name:	TARDBP (TARDBP Products)
Background:	TARDBP, TAR DNA binding protein, ALS10, TDP-43, OTTHUMP00000002171, TAR DNA-binding protein-43
Gene ID:	23435, 230908
NCBI Accession:	NP_031401
Pathways:	Positive Regulation of Peptide Hormone Secretion

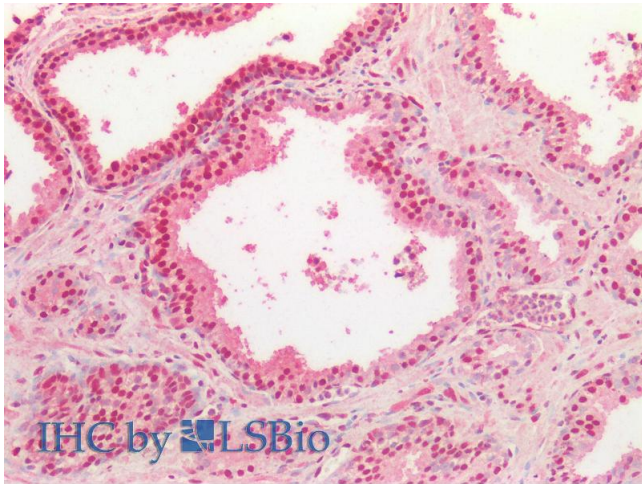
Application Details

Application Notes:	Immunohistochemistry: Paraffin embedded Human Prostate. Recommended concentration: 5 µg/mL. Western Blot: Approx. 45 kDa band observed in lysates of cell line Jurkat and in Human Cerebellum and approx. 48 kDa in Human Frontal Cortex and Hippocampus lysates (calculated MW of 44.7 kDa according to NP_031401.1). Recommended concentration: 0.3-1 µg/mL. Peptide ELISA: antibody detection limit dilution 1:16000.
--------------------	--

Restrictions:	For Research Use only
---------------	-----------------------

Handling

Format:	Liquid
Concentration:	0.5 mg/mL
Buffer:	Supplied at 0.5 mg/mL in Tris saline, 0.02 % sodium azide, pH 7.3 with 0.5 % bovine serum albumin.
Preservative:	Sodium azide
Precaution of Use:	This product contains Sodium azide: a POISONOUS AND HAZARDOUS SUBSTANCE which should be handled by trained staff only.
Handling Advice:	Minimize freezing and thawing.
Storage:	-20 °C
Storage Comment:	Aliquot and store at -20°C, with minimal freeze/thawing. A working aliquot may be refrigerated at 4°C for a few weeks and still remain viable.



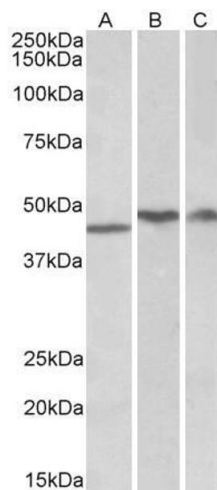
Immunohistochemistry

Image 1. ABIN334503 (5µg/ml) staining of paraffin embedded Human Prostate. Steamed antigen retrieval with citrate buffer pH 6, AP-staining.



Western Blotting

Image 2. ABIN334503 (0.3µg/ml) staining of Jurkat lysate (35µg protein in RIPA buffer). Primary incubation was 1 hour. Detected by chemiluminescence.



Western Blotting

Image 3. ABIN334503 (1µg/ml) staining of Human Cerebellum (A), Frontal Cotex (B) and Hippocampus (C) lysates (35µg protein in RIPA buffer). Primary incubation was 1 hour. Detected by chemiluminescence.