



[Go to Product page](#)

Datasheet for ABIN334507

anti-THRA antibody (Internal Region)

3 Images

Overview

Quantity:	100 µg
Target:	THRA
Binding Specificity:	Internal Region
Reactivity:	Human
Host:	Goat
Clonality:	Polyclonal
Conjugate:	This THRA antibody is un-conjugated
Application:	Western Blotting (WB), ELISA, Immunohistochemistry (IHC)

Product Details

Purpose:	THRA
Immunogen:	Peptide with sequence C-KEEMIRSLQQR, from the internal region of the protein sequence according to NP_955366.1, NP_003241.2.
Sequence:	KEEMIRSLQQ RP
Isotype:	IgG
Specificity:	This antibody is expected to recognize both reported isoforms (NP_955366.1, NP_003241.2). This antibody is not expected to cross-react to THRB.
Cross-Reactivity:	Cow, Dog, Human, Mouse, Pig, Rat
Purification:	Purified from goat serum by ammonium sulphate precipitation followed by antigen affinity chromatography using the immunizing peptide.

Product Details

Grade: Verified

Target Details

Target: THRA

Alternative Name: THRA ([THRA Products](#))

Background: THRA, thyroid hormone receptor, alpha (erythroblastic leukemia viral (v-erb-a) oncogene homolog, avian), AR7, EAR7, ERB-T-1, ERBA, ERBA1, MGC000261, MGC43240, NR1A1, THRA1, THRA2, c-ERBA-1, ERBA-related 7, avian erythroblastic leukemia viral (v-erb-a) onc

Gene ID: 7067, 21833, 81812

NCBI Accession: [NP_955366](#), [NP_003241](#)

Pathways: [Nuclear Receptor Transcription Pathway](#), [Steroid Hormone Mediated Signaling Pathway](#), [Sensory Perception of Sound](#), [Cellular Response to Molecule of Bacterial Origin](#), [Regulation of Lipid Metabolism by PPARalpha](#), [Regulation of Muscle Cell Differentiation](#), [Maintenance of Protein Location](#), [Skeletal Muscle Fiber Development](#)

Application Details

Application Notes: Immunohistochemistry: Paraffin embedded Human Tonsil and Breast. Recommended concentration: 3.75 µg/mL.
Western Blot: Approx 60+50 kDa bands observed in Human Bone Marrow lysates (calculated MW of 54.8 kDa according to NP_003241.2 and of 46.8 kDa according to NP_955366.1). Recommended concentration: 0.5-1 µg/mL. Primary incubation was 1 hour.
Peptide ELISA: antibody detection limit dilution 1:32000.

Restrictions: For Research Use only

Handling

Format: Liquid

Concentration: 0.5 mg/mL

Buffer: Supplied at 0.5 mg/mL in Tris saline, 0.02 % sodium azide, pH 7.3 with 0.5 % bovine serum albumin.

Preservative: Sodium azide

Precaution of Use: This product contains Sodium azide: a POISONOUS AND HAZARDOUS SUBSTANCE which

Handling

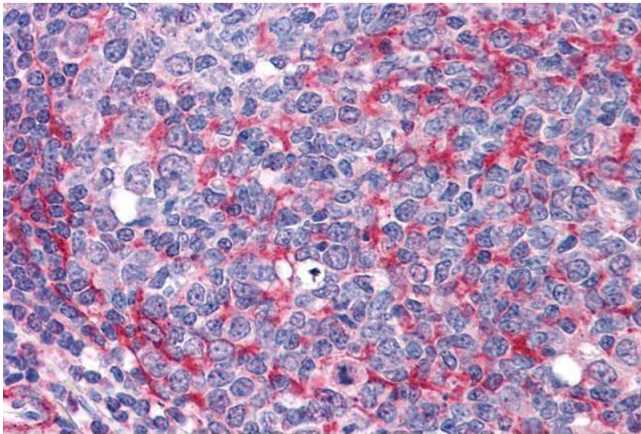
should be handled by trained staff only.

Handling Advice: Minimize freezing and thawing.

Storage: -20 °C

Storage Comment: Aliquot and store at -20°C, with minimal freeze/thawing. A working aliquot may be refrigerated at 4°C for a few weeks and still remain viable.

Images

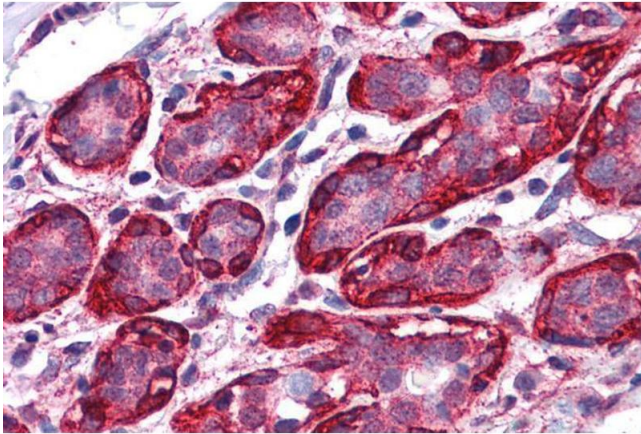


Immunohistochemistry

Image 1. ABIN334507 (3.75µg/ml) staining of paraffin embedded Human Tonsil. Steamed antigen retrieval with citrate buffer pH 6, AP-staining.



Image 2. ABIN334507 (0.5 ug/ml) staining of Human Bone Marrow lysate (35 ug protein in RIPA buffer). Primary incubation was 1 hour. Detected by chemiluminescence.



Immunohistochemistry

Image 3. ABIN334507 (3.75µg/ml) staining of paraffin embedded Human Breast. Steamed antigen retrieval with citrate buffer pH 6, AP-staining.