



[Go to Product page](#)

Datasheet for ABIN334515  
**anti-TPD52L1 antibody (Internal Region)**

1 Image

Overview

Quantity:	100 µg
Target:	TPD52L1
Binding Specificity:	Internal Region
Reactivity:	Human
Host:	Goat
Clonality:	Polyclonal
Conjugate:	This TPD52L1 antibody is un-conjugated
Application:	Western Blotting (WB), ELISA

Product Details

Purpose:	TPD52L1 / D53
Immunogen:	Peptide with sequence C-EPLQGTDEDAVASAD, from the internal region of the protein sequence according to NP_003278.1, NP_001003395.1, NP_001003396.1, NP_001003397.1.
Sequence:	EPLQGTDEDA VASAD
Isotype:	IgG
Specificity:	This antibody is expected to recognise isoforms 1, 3 and 4 (NP_003278.1, NP_001003396.1 and NP_001003397.1 resp.).
Cross-Reactivity:	Human
Purification:	Purified from goat serum by ammonium sulphate precipitation followed by antigen affinity chromatography using the immunizing peptide.

## Product Details

---

Grade: Verified

## Target Details

---

Target: TPD52L1

Alternative Name: TPD52L1 ([TPD52L1 Products](#))

Background: TPD52L1, hD53, tumor protein D52-like 1, D53, MGC8556, TPD52L2, tumor protein D52-like 2, tumor protein D53

Gene ID: 7164

NCBI Accession: [NP\\_003278](#), [NP\\_001003395](#), [NP\\_001003396](#), [NP\\_001003397](#)

Pathways: [Positive Regulation of Endopeptidase Activity](#)

## Application Details

---

Application Notes: Western Blot: Approx 26 kDa band observed in Human Breast cancer lysates (calculated MW of 22.5 kDa according to NP\_003278.1). Recommended concentration: 0.1-0.3 µg/mL. See also our D52 and D54 products.  
Peptide ELISA: antibody detection limit dilution 1:8000.

Restrictions: For Research Use only

## Handling

---

Format: Liquid

Concentration: 0.5 mg/mL

Buffer: Supplied at 0.5 mg/mL in Tris saline, 0.02 % sodium azide, pH 7.3 with 0.5 % bovine serum albumin.

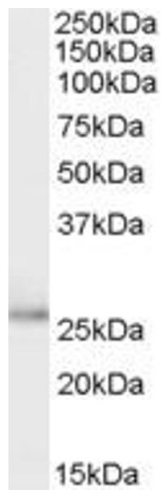
Preservative: Sodium azide

Precaution of Use: This product contains Sodium azide: a POISONOUS AND HAZARDOUS SUBSTANCE which should be handled by trained staff only.

Handling Advice: Minimize freezing and thawing.

Storage: -20 °C

Storage Comment: Aliquot and store at -20°C, with minimal freeze/thawing. A working aliquot may be refrigerated at 4°C for a few weeks and still remain viable.



### Western Blotting

**Image 1.** ABIN334515 (0.1µg/ml) staining of Human Breast cancer lysate (35µg protein in RIPA buffer). Primary incubation was 1 hour. Detected by chemiluminescence.