

Datasheet for ABIN334520
anti-TUSC3 antibody (Internal Region)[Go to Product page](#)

3 Images

Overview

Quantity:	100 µg
Target:	TUSC3
Binding Specificity:	Internal Region
Reactivity:	Human
Host:	Goat
Clonality:	Polyclonal
Conjugate:	This TUSC3 antibody is un-conjugated
Application:	Western Blotting (WB), ELISA, Immunohistochemistry (IHC)

Product Details

Purpose:	TUSC3 / N33
Immunogen:	Peptide with sequence PQRQCSVCRQAN, from the internal region of the protein sequence according to NP_006756.2, NP_839952.1.
Sequence:	PQRQCSVCRQ AN
Isotype:	IgG
Specificity:	This antibody is expected to recognise both reported isoforms (NP_006756.2, NP_839952.1).
Cross-Reactivity:	Cow, Human, Mouse, Rat
Purification:	Purified from goat serum by ammonium sulphate precipitation followed by antigen affinity chromatography using the immunizing peptide.
Grade:	Verified

Target Details

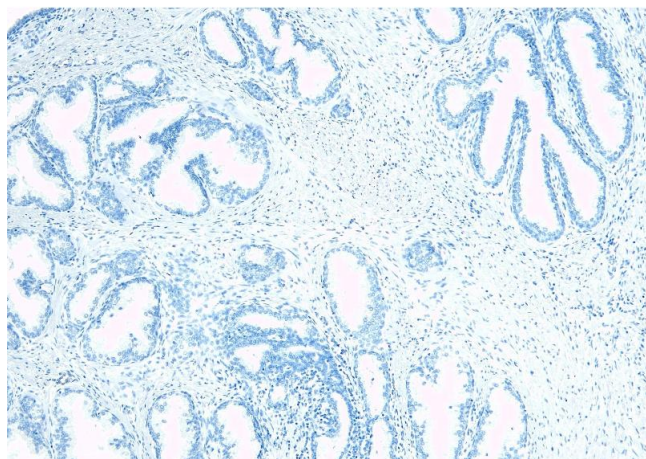
Target:	TUSC3
Alternative Name:	TUSC3 (TUSC3 Products)
Background:	TUSC3, tumor suppressor candidate 3, D8S1992, MGC13453, N33, OST3A, Putative prostate cancer tumor suppressor
Gene ID:	7991, 80286, 290783
NCBI Accession:	NP_006756 , NP_839952
Pathways:	Cell RedoxHomeostasis

Application Details

Application Notes:	Immunohistochemistry: Paraffin embedded Human Prostate. Recommended concentration: 4-8 µg/mL. Western Blot: Approx 37 kDa band observed in Human Liver and Lung lysates (calculated MW of 39.7 kDa according to NP_006756.2 and of 39.6 according to NP_839952.1). An additional band of unknown identity was also consistently observed at 22 kDa, which was Peptide ELISA: antibody detection limit dilution 1:1000.
Restrictions:	For Research Use only

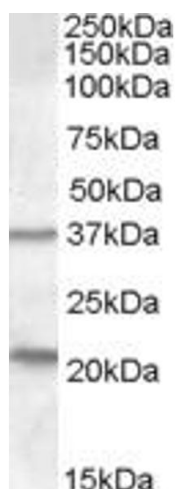
Handling

Format:	Liquid
Concentration:	0.5 mg/mL
Buffer:	Supplied at 0.5 mg/mL in Tris saline, 0.02 % sodium azide, pH 7.3 with 0.5 % bovine serum albumin.
Preservative:	Sodium azide
Precaution of Use:	This product contains Sodium azide: a POISONOUS AND HAZARDOUS SUBSTANCE which should be handled by trained staff only.
Handling Advice:	Minimize freezing and thawing.
Storage:	-20 °C
Storage Comment:	Aliquot and store at -20°C, with minimal freeze/thawing. A working aliquot may be refrigerated at 4°C for a few weeks and still remain viable.



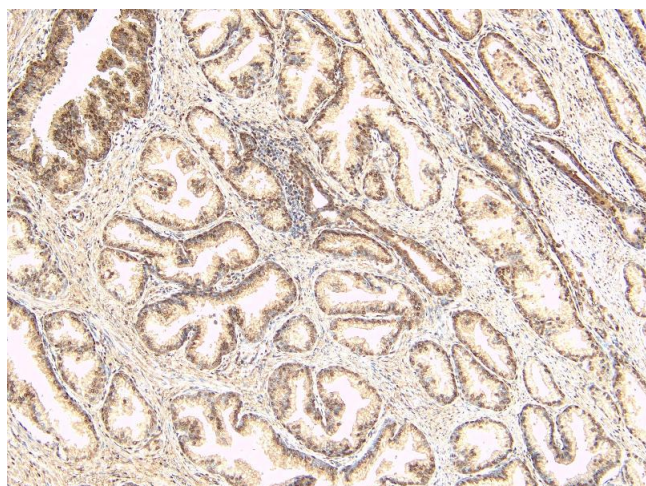
Immunohistochemistry

Image 1. ABIN334520 Negative Control showing staining of paraffin embedded Human Prostate, with no primary antibody.



Western Blotting

Image 2. ABIN334520 (1µg/ml) staining of Human Liver lysate (35µg protein in RIPA buffer). Detected by chemiluminescence.



Immunohistochemistry

Image 3. ABIN334520 (8µg/ml) staining of paraffin embedded Human Prostate. Heat induced antigen retrieval with citrate buffer pH 6, HRP-staining.